



## Coningham Road, W12

### £575,000

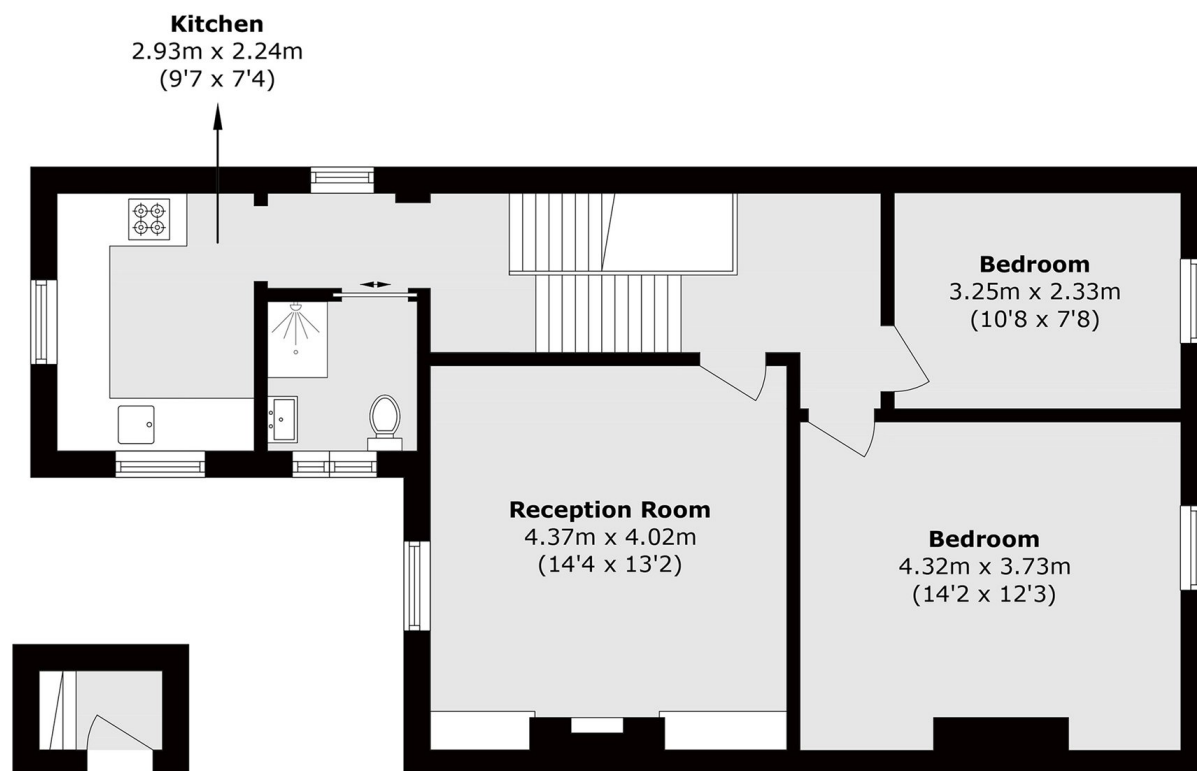
A large and bright two-bedroom apartment in the heart of Shepherd's Bush. The property offers a spacious separate reception room, two well-proportioned double bedrooms, and a beautifully light kitchen filled with windows. The apartment blends modern finishes with original character features, including exposed brickwork and beams, creating a stylish and welcoming place to live.

The apartment runs parallel with Cathnor Park and has easy access to all local amenities of Uxbridge Road. Both Shepherd's Bush station and Goldhawk Road station are under half a mile away.

### Features

- Two Bedrooms
- Large Reception
- Separate Kitchen
- Modern Throughout
- Naturally Bright Throughout
- No Onward Chain

# Coningham Road, London, W12



**First Floor**

**Second Floor**

Total area (approx.): 67.6 sq. m (727.6 sq. ft)

## Dexters

Shepherds Bush and Brook Green  
53 Shepherds Bush Green  
London  
W12 8PS  
Sales  
020 8740 2900

Energy Rating: D. We aim to make our particulars both accurate and reliable. However they are not guaranteed; nor do they form part of an offer or contract. If you require clarification on any points then please contact us, especially if you're traveling some distance to view. Please note that appliances and heating systems have not been tested and therefore no warranties can be given as to their good working order.

 **RICS** | Regulated  
Estate Agent  
and Letting Agent

[dexters.co.uk](https://www.dexters.co.uk)