

Haydons Road, SW19

£250,000

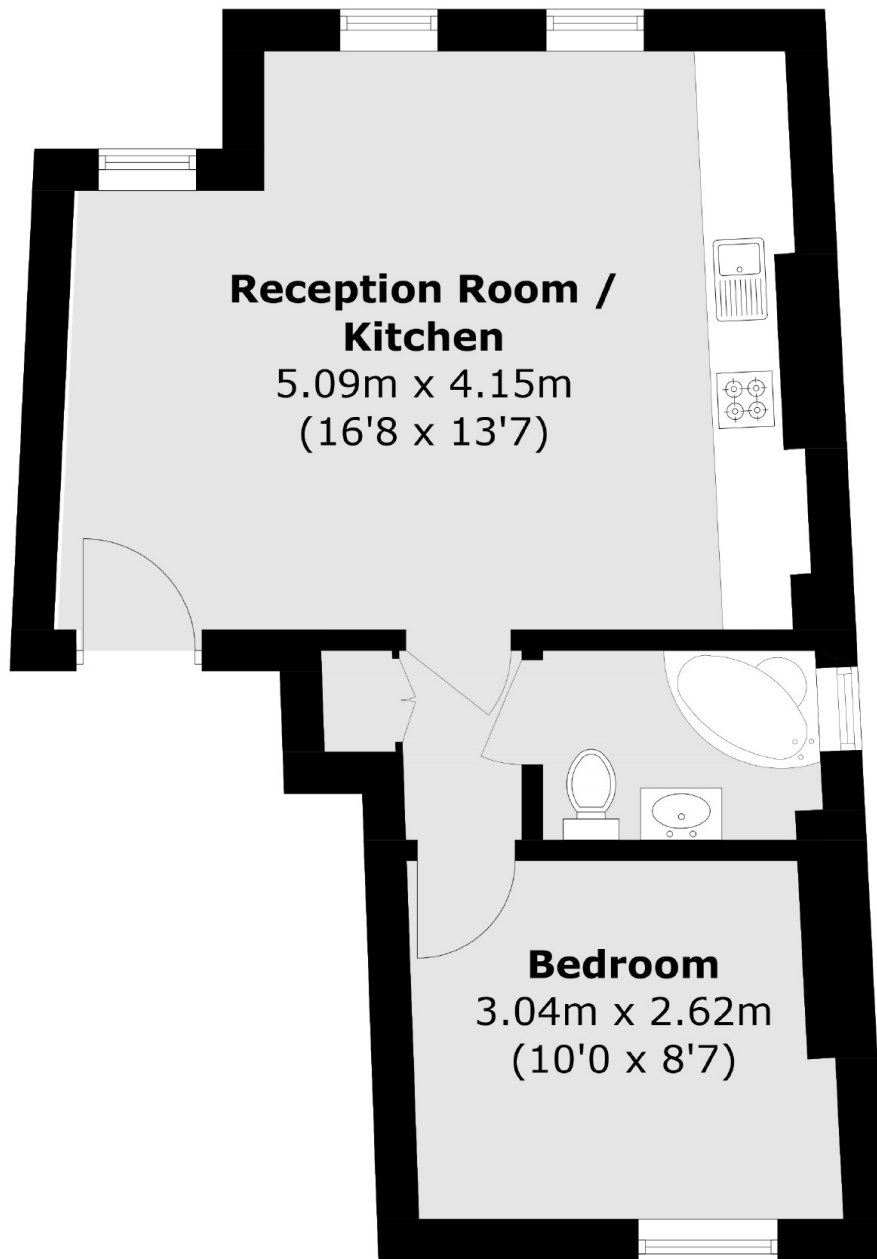
This is a first floor one double bedroom period conversion with an open plan kitchen/lounge. The property has been recently modernised by the current owners.

Located on the edge of South Park Gardens area, with nearby transport links to London from the ThamesLink, District Line in Wimbledon town centre and Northern Line within a short distance away.

Features

- Period Conversion
- One Double Bedroom
- First Floor Apartment
- Off-Street Parking
- Long Lease

Haydons Road,
London, SW19



First Floor

Total area (approx.): 33.7 sq. m (362.7 sq. ft)

Dexters

Wimbledon
12 The Broadway
London
SW19 1RF
Sales
020 8545 8580

Energy Rating: D. We aim to make our particulars both accurate and reliable. However they are not guaranteed; nor do they form part of an offer or contract. If you require clarification on any points then please contact us, especially if you're traveling some distance to view. Please note that appliances and heating systems have not been tested and therefore no warranties can be given as to their good working order.

 **RICS** | Regulated
Estate Agent
and Letting Agent

dexters.co.uk