



## Home Park Road, SW19

### £1,075,000

A four bedroom, three bathroom modern terrace house, located just round the corner from Wimbledon Park Station. The house has off street parking and is sold with no onward chain.

Located just around the corner from Leopold Parade with its boutique cafés, shops and bars. Both Wimbledon Park and Wimbledon Town Centre are nearby, with District line and overground services.

### Features

- Four Bedrooms
- Three Bathrooms
- Landscaped Rear Garden
- Off Street Parking
- Near Wimbledon Park
- No Onward Chain





## Home Park Road, SW19

The ground floor has a study/ bedroom to the front, with a shower room off the hallway and a large open kitchen/ breakfast room to the rear. There are French doors leading to the tiered, landscaped rear garden, complete with a hot tub and with direct access to the off street parking.

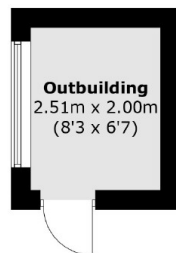
The first floor has a large reception room, with a large double bedroom and ensuite bathroom. The top floor has two further double bedrooms, with a beautiful bathroom and ample storage.

The property is sold in with no onward chain, direct access to an off street parking space that is allocated to the house, as well as an outbuilding.

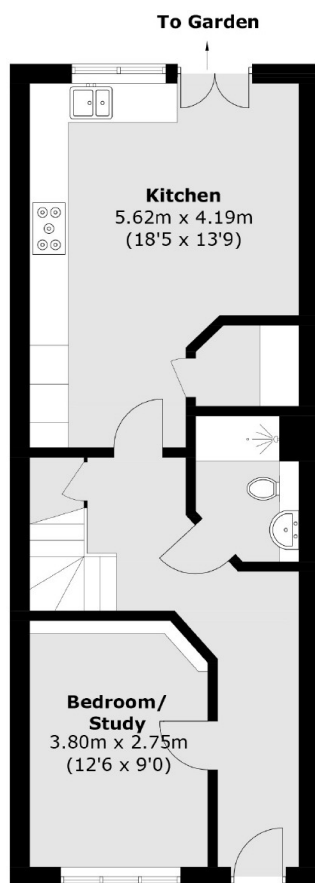




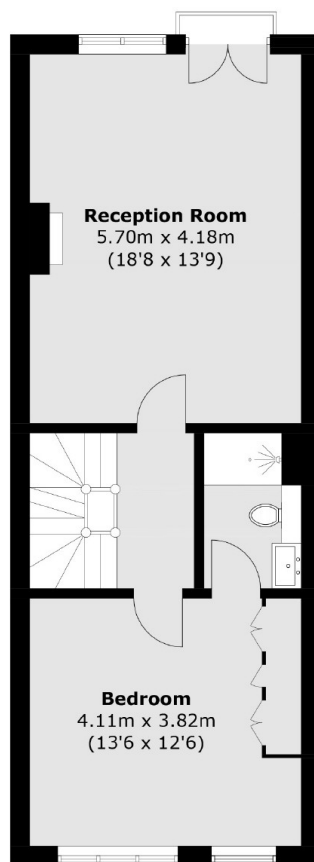
# Home Park Road, London, SW19



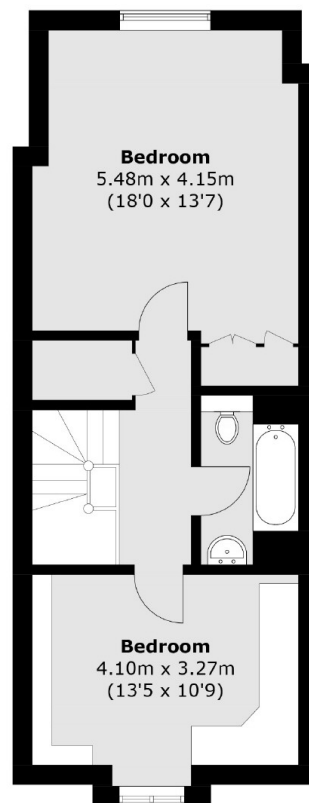
(Not Shown In Actual  
Location / Orientation)



**Ground Floor**



**First Floor**



**Second Floor**

Total area (approx.): 148.0 sq. m (1,593.1 sq. ft)  
Outbuilding area : 5.1 sq. m (54.9 sq. ft)