

## Elm Grove, SW19

### £345,000

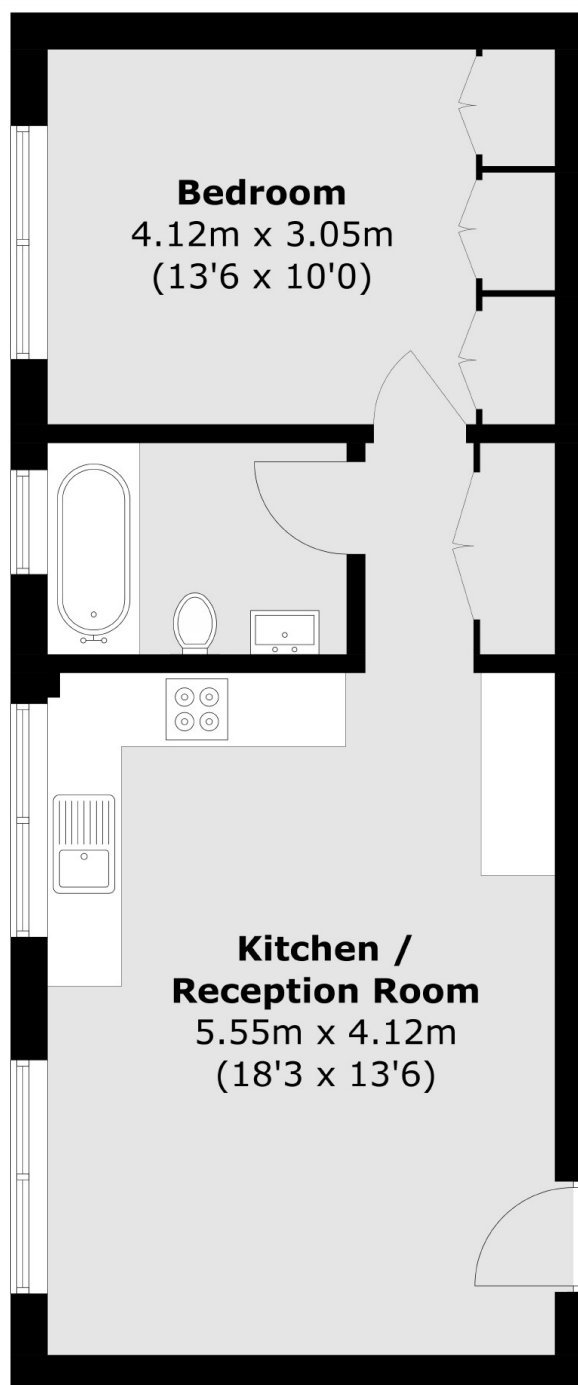
A one double bedroom modern apartment located a short walk from Wimbledon station. The property is offered with no onward chain, has a high spec finish throughout and has a wonderful communal roof terrace.

Elm Grove is a cul-de-sac situated just off of Worple Road and just under half a mile walk from Wimbledon Broadway allowing easy access to the town centre's restaurants and shops. Transport links include overground, underground and a number of good bus routes.

### Features

- Modern Development
- High Specification Finish
- One Double Bedroom
- New 125 Year Lease
- 8 Year ICW Guarantee
- No Onward Chain

# Elm Grove, London, SW19



Total area (approx.): 43.9 sq. m (472.5 sq. ft)