

Darlaston Road, SW19

£399,950

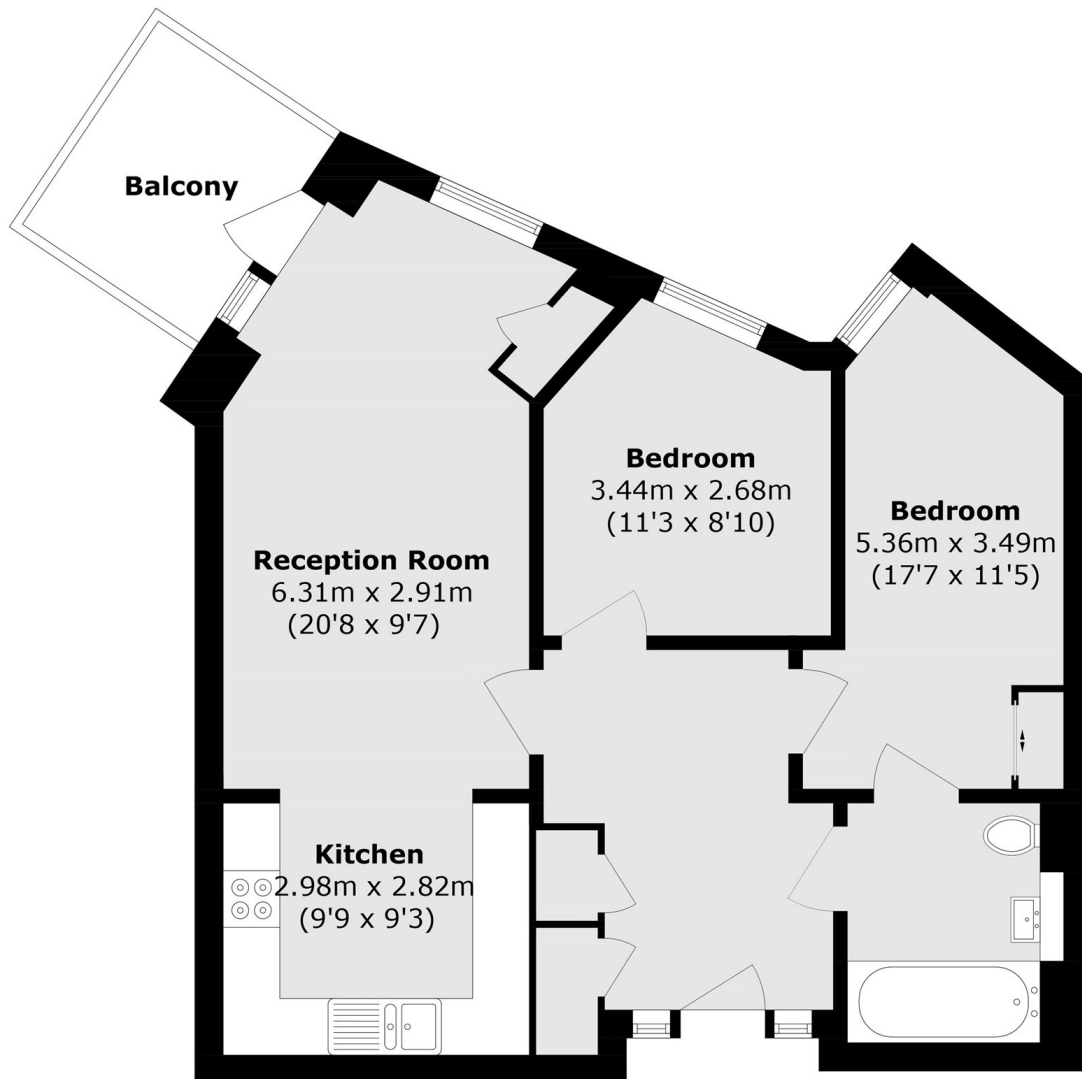
RETIREMENT FLAT FOR OVER 55'S. Situated in a purpose built development set within a leafy residential location. This first floor flat has an open plan kitchen/ living room, two double bedroom and a separate bathroom. Further benefits include a concierge, underground parking, residents' lounge, garden room, landscaped communal gardens, Apello Smart Living system and basement storage facilities.

Darlaston Road is certainly one of Wimbledon's most highly regarded roads with the village and the common nearby. District line, National Rail and Tramlink are within walking distance, as well as churches, library, banks, gyms, supermarkets, restaurants, bars and shops.

Features

- Two Double Bedrooms
- Over 55's Development
- Communal Facilities
- Private Parking
- Private Balcony
- No Onward Chain

Darlaston Road, London, SW19



First Floor

Total area (approx.): 66.0 sq. m (710.0 sq. ft)

Balcony area (approx.): 5.5 sq. m (59.2 sq. ft)