



## Kingston Road, SW19

### £225,000

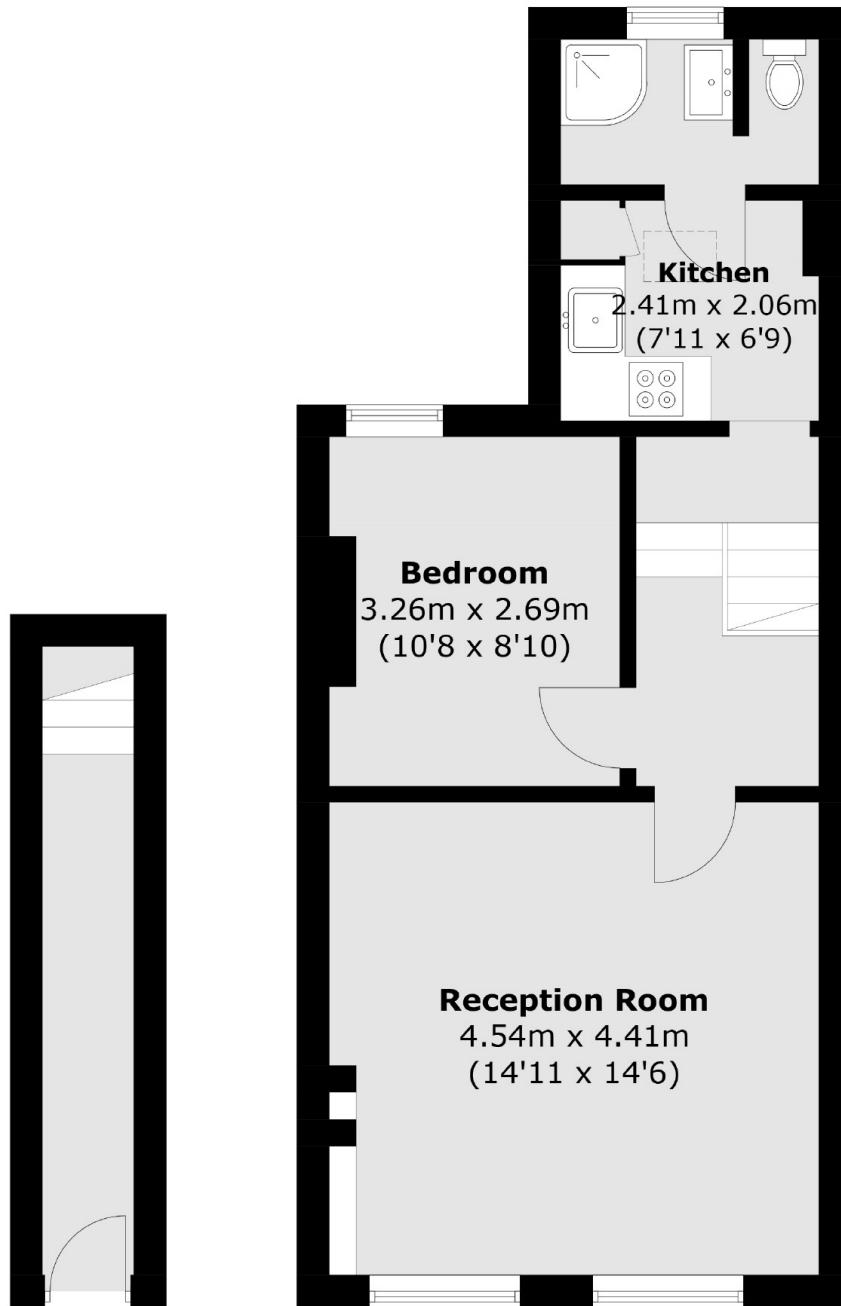
A large first floor one double bedroom apartment, measured at over 530 square feet. The property has a long lease and is sold with no onward chain.

Perfectly located for Wimbledon Town Centre and Dundonald Park. Close to transport links with the District line, Northern line, Wimbledon Overground Station and The Broadway offering a range of entertainment.

### Features

- One Double Bedroom
- Over 530 Square Feet
- Long Lease
- No Onward Chain
- Loft Conversion Potential
- Central Location

# Kingston Road, London, SW19



**Ground Floor**

**First Floor**

Total area (approx.): 49.5 sq. m (532.8 sq. ft)

## Dexters

Wimbledon  
12 The Broadway  
London  
SW19 1RF  
Sales  
020 8545 8580

Energy Rating: E. We aim to make our particulars both accurate and reliable. However they are not guaranteed; nor do they form part of an offer or contract. If you require clarification on any points then please contact us, especially if you're traveling some distance to view. Please note that appliances and heating systems have not been tested and therefore no warranties can be given as to their good working order.

 **RICS** | Regulated  
Estate Agent  
and Letting Agent

[dexters.co.uk](https://www.dexters.co.uk)