



Albany Road, SW19

£695,000

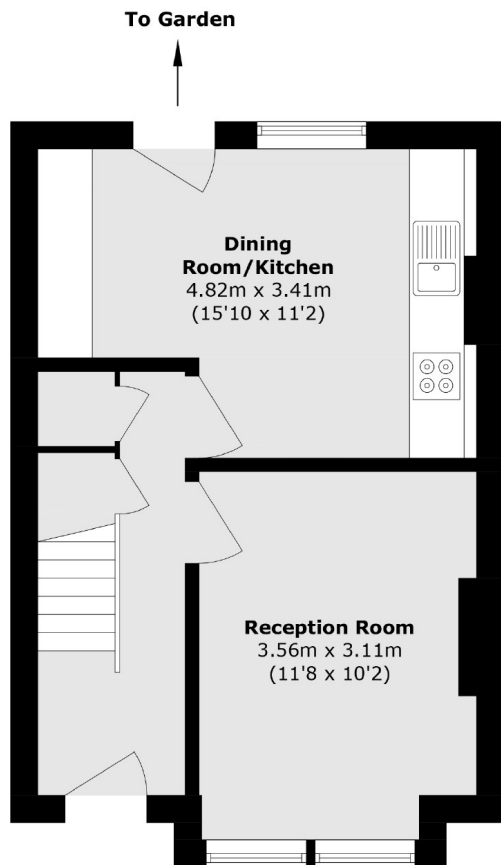
A two double bedroom Victorian terrace house, located in a quiet cul de sac. The property has huge potential to extend, in to the loft and to the rear, complete with a garden in excess of forty feet.

Albany Road is a quiet street in a very convenient location. The area is highly sought-after due to the good schools and close proximity to green open spaces. Haydons Road Thames Link is 0.1 mile away and Wimbledon Park is 0.6 miles away.

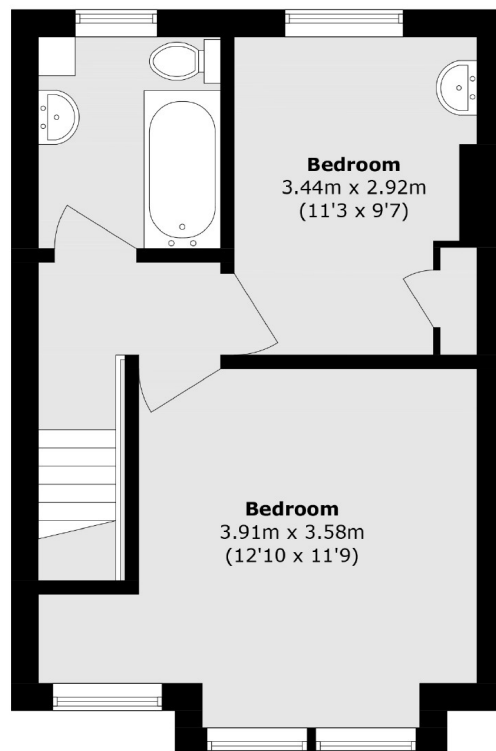
Features

- Two Double Bedrooms
- Victorian Terrace House
- Huge Extension Potential
- Cul De Sac
- Garden Over Forty Feet
- On Street Parking

Albany Road, London, SW19



Ground Floor



First Floor

Total area (approx.): 70.8 sq. m (762.0 sq. ft)