

## Cottenham Park Road, SW20

£5,500 Per calendar month

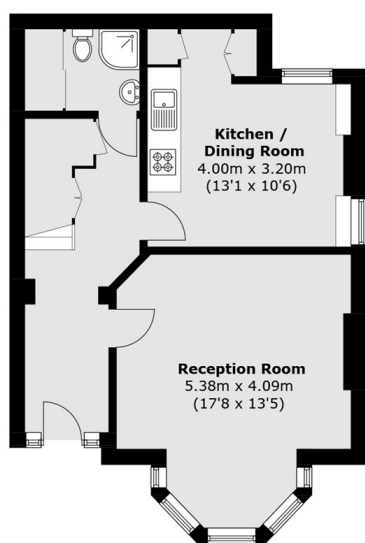
An exceptional newly refurbished five bedroom, five bathroom period home over three floors, located on the edge of Wimbledon Village. The property offers a dine-in kitchen along with private front garden.

Located on the edge of Wimbledon Village, within close proximity to Wimbledon Common and exceptional schools. Wimbledon Village has a host of boutique shops, delicious restaurants and a vibrant coffee culture.

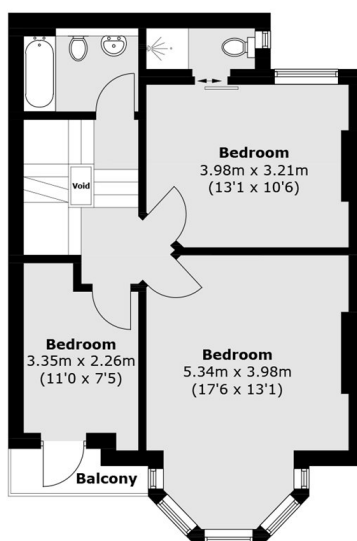
### Features

- Five Bedrooms
- Five Bathroom
- Period Features
- Eat-In Kitchen
- Newly Refurbished
- Unfurnished

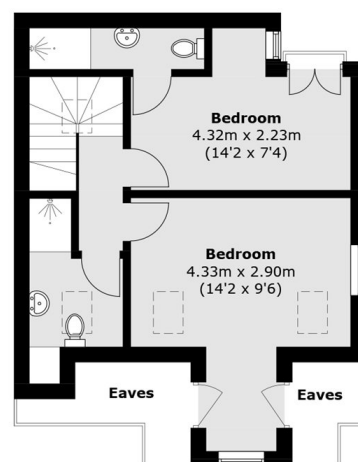
# Cottenham Park Road, London, SW20



**Ground Floor**



**First Floor**



**Second Floor**

Total area (approx.): 149.4 sq. m (1,608.1 sq. ft)