



Griffiths Road, SW19

£1,375,000

Dexters



Griffiths Road, SW19

An opportunity to purchase this well presented, halls adjoining semi-detached Edwardian home. Measuring just shy of 1,800sq ft, the accommodation offers six bedrooms, two bathrooms and further benefits from a mature garden.

The ground floor has a separate bay-fronted double reception room with a gas fireplace. The property extends to the rear with a vast combined kitchen, living and dining room offering real versatility to suit the new owner's needs, in addition to a ground floor w/c and double doors leading to the rear garden.

On the first floor, you will find four bedrooms, three of which are well-sized and come complete with built in wardrobes, and a family bathroom. The loft has been fully converted with two bright and spacious double bedrooms and separate shower room.

The rear of the property opens on to a low maintenance garden laid to hard standing patio and lawn with shrub borders and a shed.

Located on a quiet cul de sac just off The Broadway, within close proximity to sought after schools and equidistant to Wimbledon and South Wimbledon stations. Shops, bars and delicious restaurants are all on your doorstep.

Features

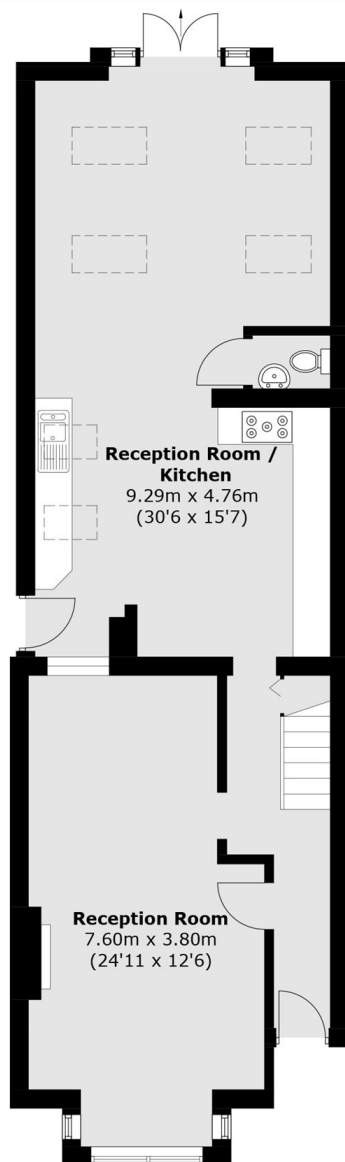
- Six Bedrooms
- Two Bathrooms
- Halls Adjoining
- Semi Detached
- Edwardian
- Large Rear Garden



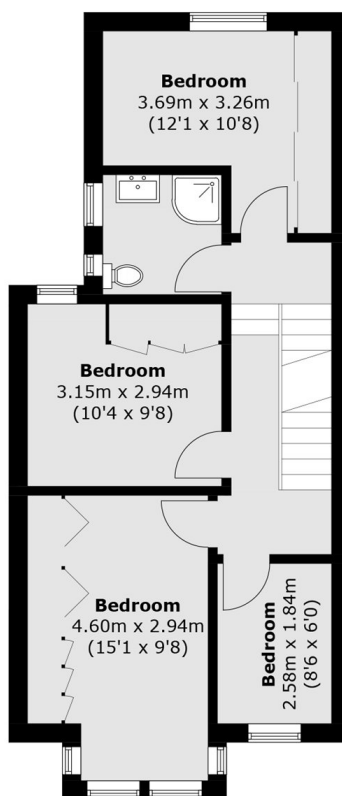




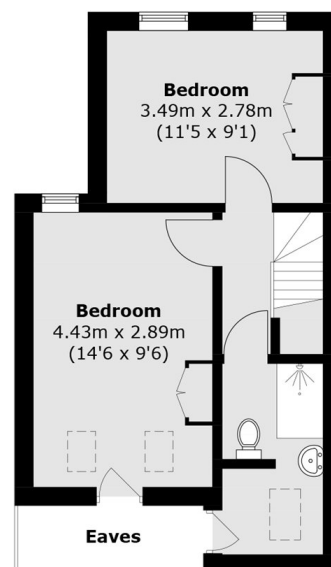
Griffiths Road, London, SW19



Ground Floor



First Floor



Second Floor

Total area (approx.): 164.2 sq. m (1,767.4 sq. ft)
(Excluding Eaves)