



Dorset Road, SW19  
£1,295,000

**Dexters**





## Dorset Road, SW19

A large four bedroom, two bathroom 1920's home. There's off street parking for two cars, three reception areas and a large south west facing rear garden with a summer house.

The ground floor has a large receiving hallway, with a striking front reception room, complete with a square period bay window and plantation shutters. There's a w/c off the hallway, which leads to the open kitchen/ dining room, complete with an island and another reception room.

The first floor has two double bedrooms, both with built in wardrobes, the single bedroom is also a decent size. The family bathroom located on this floor is a wonderful four piece suite bathroom with a corner bath and walk in shower.

The loft has been converted, offering an exceptionally sized principle bedroom, complete with a large ensuite with built in wardrobes and lovely views over Merton Park.

The property is located in the heart of Merton Park, within close proximity to a number of great schools. Within close proximity to excellent transport links, including the Northern Line and the Thameslink.

### Features

- Four Bedrooms
- Two Bathrooms
- South West Facing Garden
- Off Street Parking
- Near Merton Park Primary
- Loft And Rear Extended







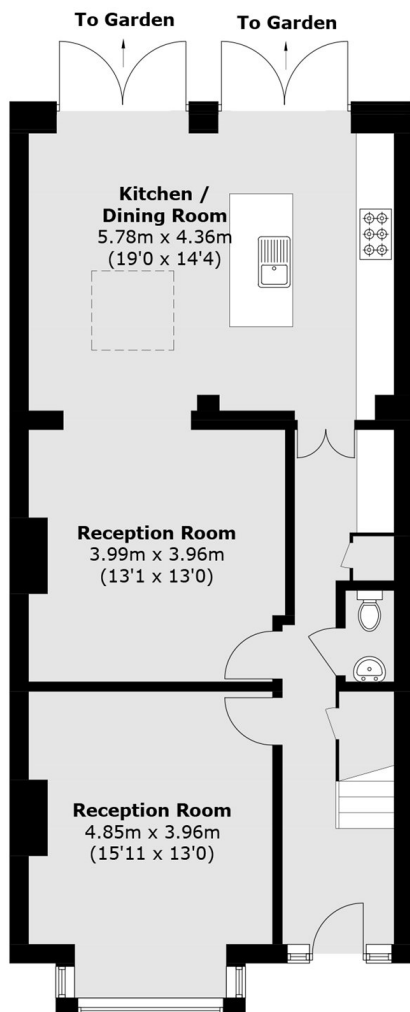




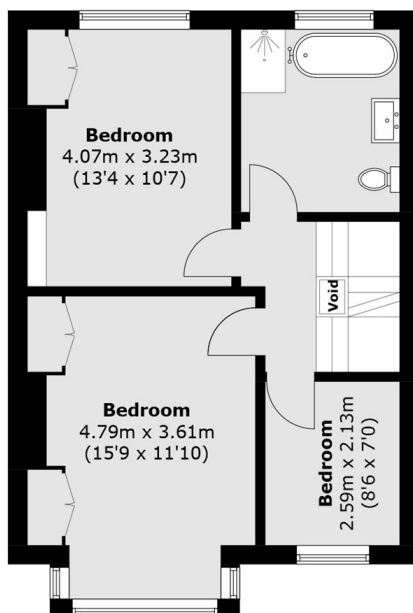




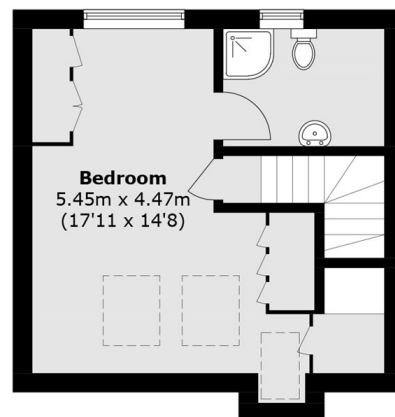
# Dorset Road, London, SW19



**Ground Floor**



**First Floor**



**Second Floor**

Total area (approx.): 158.3 sq. m (1,703.8 sq. ft)  
(Excluding Void)