



Elm Grove, SW19

£329,950

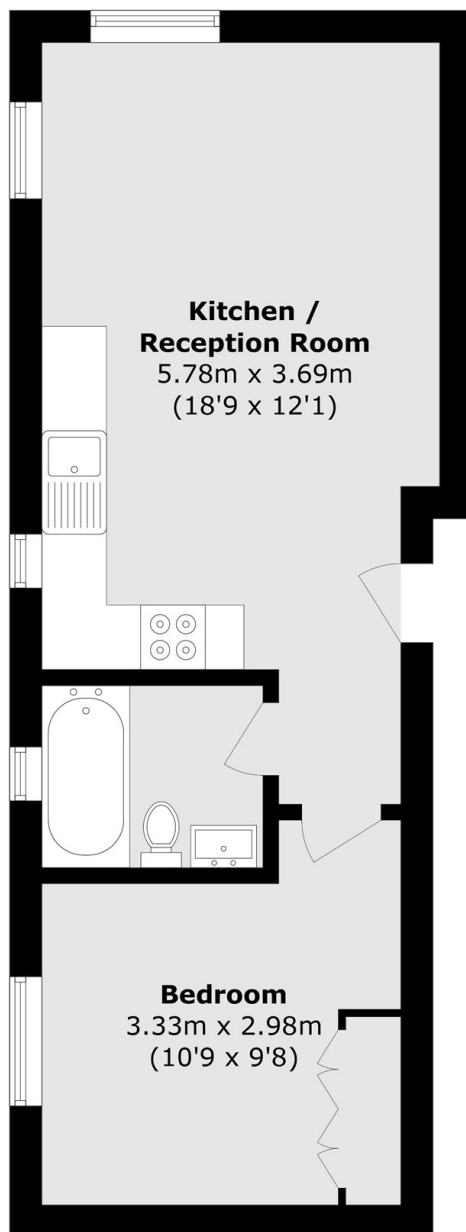
A one double bedroom modern apartment located a short walk from Wimbledon station. The property is offered with no onward chain, has a high spec finish throughout and has a wonderful communal roof terrace.

Elm Grove is a cul de sac situated just off of Worple Road and just under half a mile walk from Wimbledon Broadway allowing easy access to the town centre's restaurants and shops. Transport links include overground, underground and a number of good bus routes.

Features

- Modern Development
- High Specification Finish
- One Double Bedroom
- New 125 Year Lease
- 8 Year ICW Guarantee
- No Onward Chain

Elm Grove, LONDON, SW19



Total area (approx.): 37.4 sq. m (402.6 sq. ft)

Dexters

Wimbledon
12 The Broadway
London
SW19 1RF
Sales
020 8545 8580

Energy Rating: B. We aim to make our particulars both accurate and reliable. However they are not guaranteed; nor do they form part of an offer or contract. If you require clarification on any points then please contact us, especially if you're traveling some distance to view. Please note that appliances and heating systems have not been tested and therefore no warranties can be given as to their good working order.

 **RICS** | Regulated
Estate Agent
and Letting Agent

[dexters.co.uk](https://www.dexters.co.uk)