



## Hamilton Road Mews, SW19

### £300,000

An incredibly unique, one double bedroom freehold house located on a quiet cobbled street, just a few steps away from the Northern line in Wimbledon. Arranged over two floors, fully refurbished and with no onward chain.

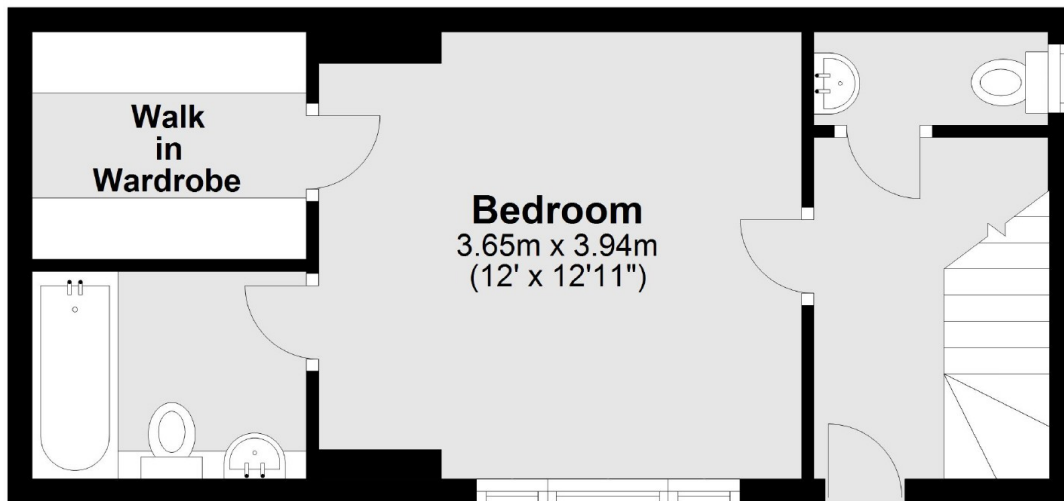
Hamilton Road Mews is tucked away within the sought after 'Battles' area. The Northern line is just moments away, alongside an awesome High Street which has a huge selection of shops, bars and restaurants.

### Features

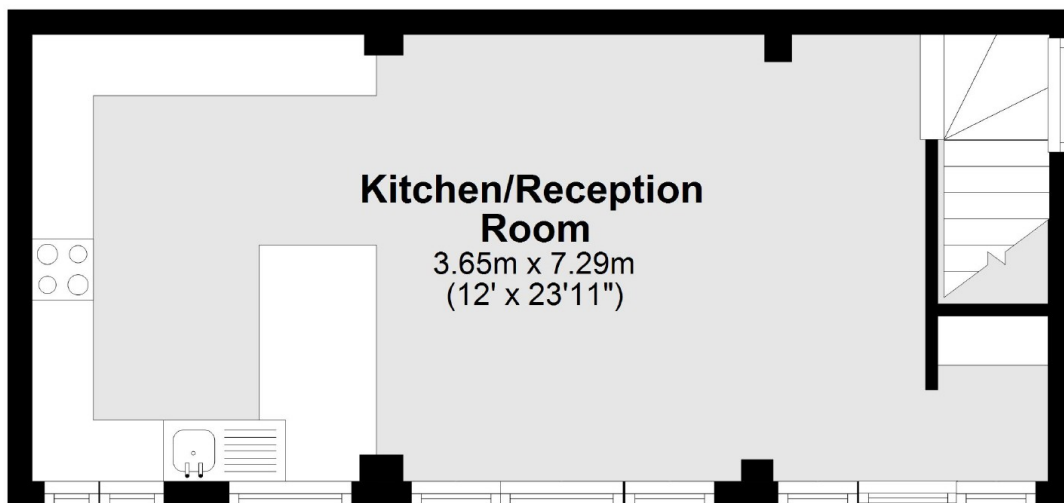
- Freehold House
- No Onward Chain
- Cobbled Street Location
- End Of Terrace
- Over 650 Square Feet
- Near The Tube

# Hamilton Road Mews, London, SW19

## Ground Floor



## First Floor



Total area: approx. 60.5 sq. metres (651.6 sq. feet)