



Clarence Road, SW19

£1,100,000

A four bedroom, two bathroom mid terrace Victorian house, located at the top end of the road, beside South Park Gardens. The house has been extended in to the loft and to the rear, offered with no onward chain.

Nestled in the highly regarded 'South Park Gardens' grid, offering quick access to Wimbledon Town Centre, district and Northern Line Tube and Haydons Road Thames Link. There are also a number of outstanding primary Schools nearby.

Features

- Four Bedrooms
- Two Bathrooms
- Loft And Rear Extended
- Beside South Park Gardens
- Holy Trinity Catchment
- No Onward Chain



Clarence Road, SW19

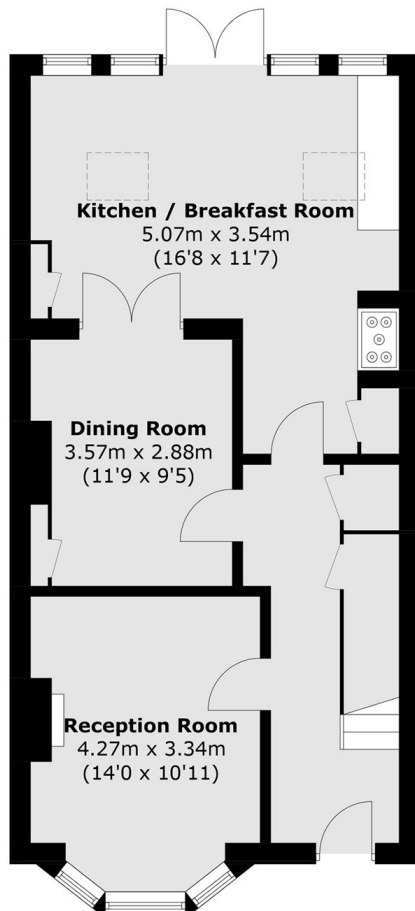
The ground floor has a separate front reception room complete with sash windows, plantation shutters and a fireplace. The rear of the house has a second reception room, that opens to the extended kitchen/ breakfast room, complete with a glass apex and French doors to the garden.

The first floor has two double bedrooms, both with original fireplaces and a built in wardrobe in each. There's a single bedroom/ study, as well as a family bathroom.

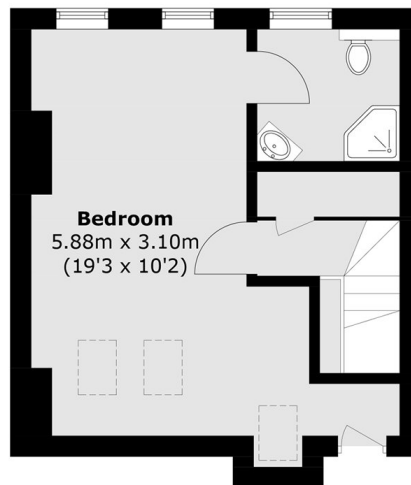
The loft has been converted to offer a principle bedroom with an ensuite bathroom and views over gardens. The house is sold with no onward chain.



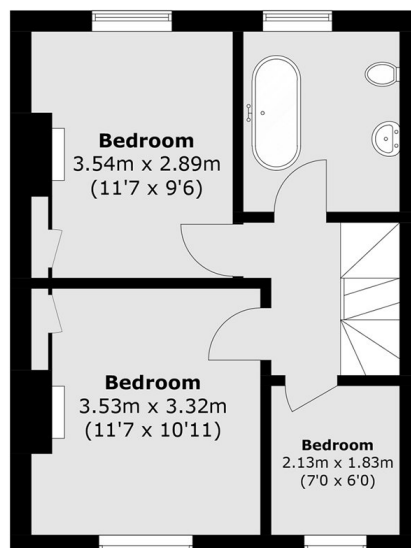
Clarence Road, London, SW19



Ground Floor



Second Floor



First Floor

Total area (approx.): 130.0 sq. m (1399.1 sq. ft)