



Worple Road, SW19

£675,000

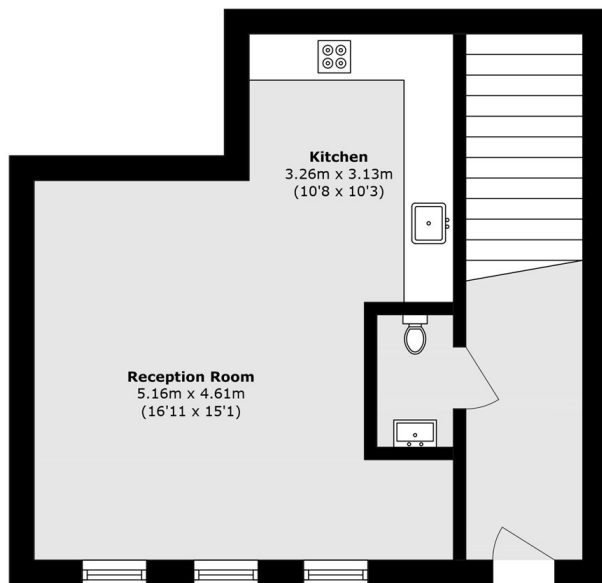
The jewel in the crown! A two double bedroom, split level, new build apartment, complete with its own front door and a private courtyard garden accessible from both bedrooms.

Located just a short distance from central Wimbledon with the district line tube, overground train and tram line, as well as exclusive shops, restaurants, pubs and bars.

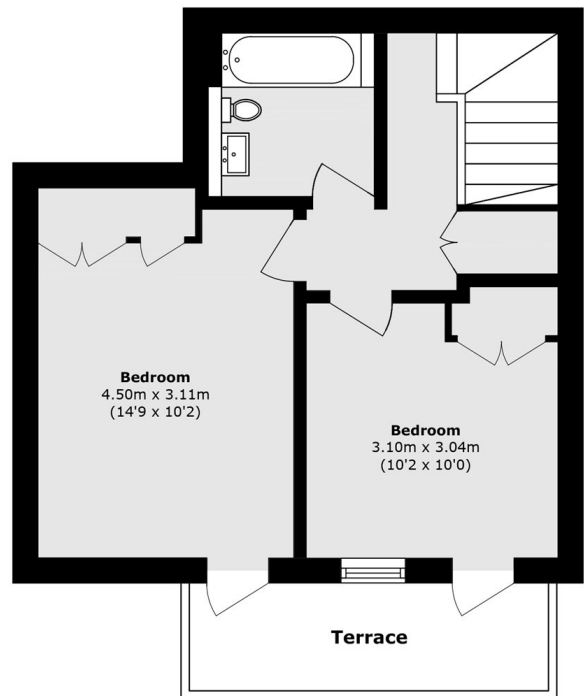
Features

- Own Front Door
- Split Level
- Two Double Bedrooms
- Private Courtyard Garden
- New Build Development
- Near 800 Square Feet

Worple Road, London, SW19



Ground Floor



Lower Ground Floor

Total area (approx.): 74.3 sq. m (790.0 sq. ft)

Terrace area (approx.): 5.7 sq. m (61.3 sq. ft)