



North Road, SW19

£1,750 Per calendar month

This two double bedroom house, arranged over three floors would be perfect for shares, a couple or young family as it is set-back from the road, has a decked garden and off-street parking.

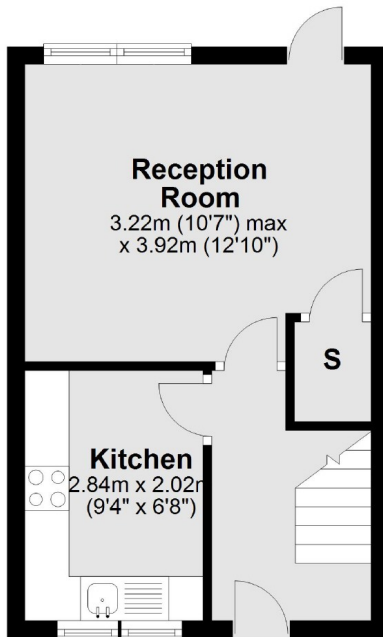
North Road is ideally located for Haydons Road rail station and South Wimbledon tube station whilst allowing good access to Wimbledon Mainline station, Wimbledon Village & Wimbledon Park.

Features

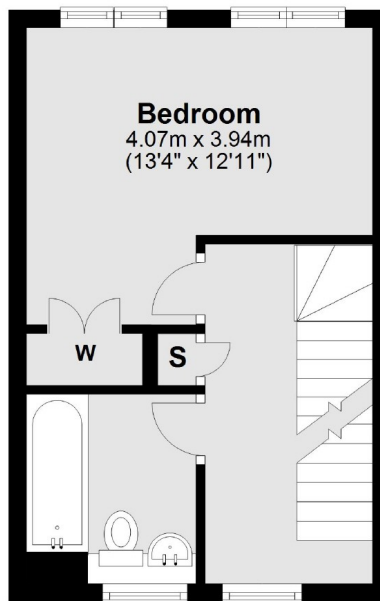
- Two Double Bedrooms
- Three Floors
- Decked Garden
- Separate Kitchen
- Parking
- Close to Transport

North Road, London, SW19

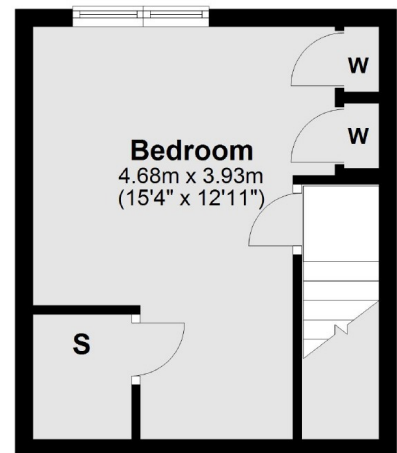
Ground Floor



First Floor



Second Floor



Total area: approx. 68.0 sq. metres (731.7 sq. feet)