



Effra Road, SW19

£450,000

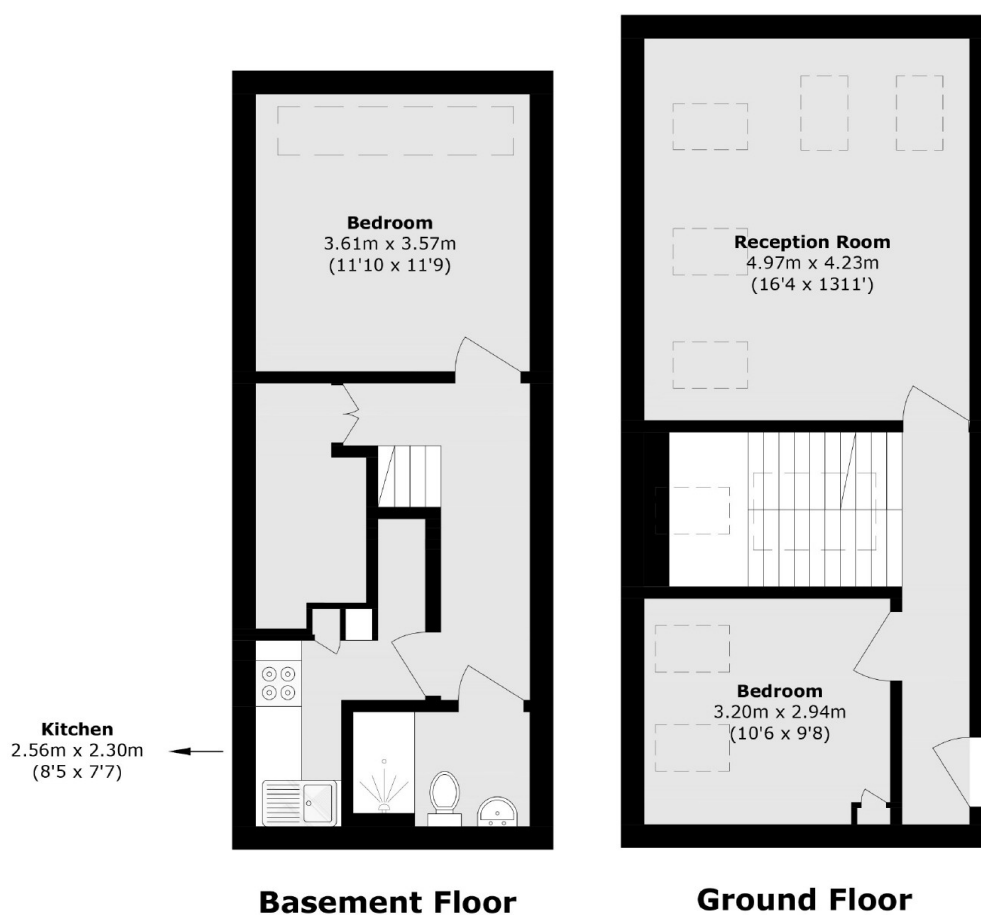
A freehold, two double bedroom, split level property, measured at 830 square feet and sold with no onward chain. The ground floor reception room has an exceptional amount of light and high ceilings.

Nestled in the highly regarded 'South Park Gardens' grid, offering quick access to Wimbledon Town Centre, district and northern line tube and Haydons Road Thames Link.

Features

- Two Double Bedrooms
- Split Level
- Own Front Door
- Freehold Property
- Modern Throughout
- No Onward Chain

Effra Road, London, SW19



Total area (approx.): 77.2 sq. m (830.9 sq. ft)