



Cowper Road, SW19
£925,000

Dexters



Cowper Road, SW19

A three double bedroom, two bathroom Victorian mid-terrace house, complete with a beautifully extended modern kitchen, a landscaped garden and no onward chain.

The ground floor has a separate reception room to the front complete with plantation shutters and a period feature fireplace. A second reception room, ideally suited as a dining area, featuring custom-built storage, seamlessly connects to the spacious open-plan kitchen and breakfast room.

The kitchen has been extended and refitted to an exceptional standard with a large central island and contrasting Quartz work surfaces. Aluminium bi-folding doors with electric blinds lead to a patio and landscaped garden.

The downstairs benefits from underfloor heating and a cloakroom with WC. The first floor has two double bedrooms and a large family bathroom. The loft has been converted to offer a large double bedroom with a Juliette balcony, considerable storage areas, a walk-in wardrobe and an ensuite modern bathroom.

The house is located on a hugely desirable tree lined street in the Poets are, close to superb schools and incredible transport links into London, including; Thameslink, Wimbledon rail, District and Northern line stations.

Features

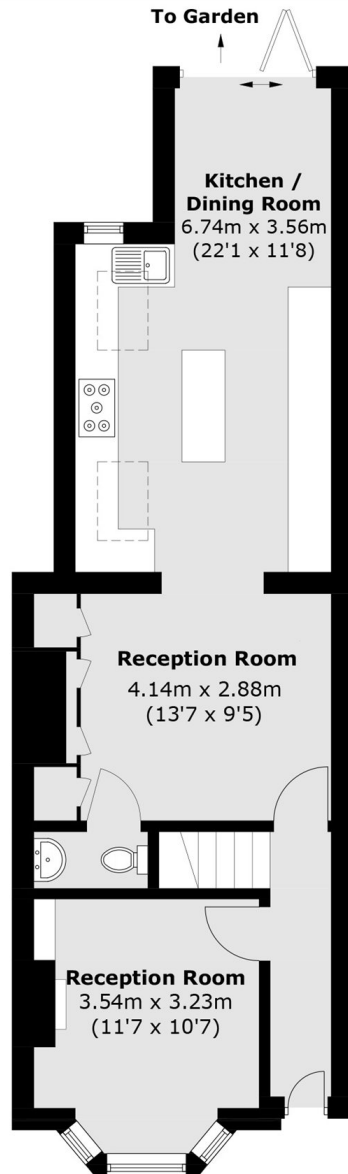
- Three Double Bedrooms
- Two Bathrooms
- Extended Modern Kitchen
- Landscaped Rear Garden
- Tree Lined Street
- No Onward Chain



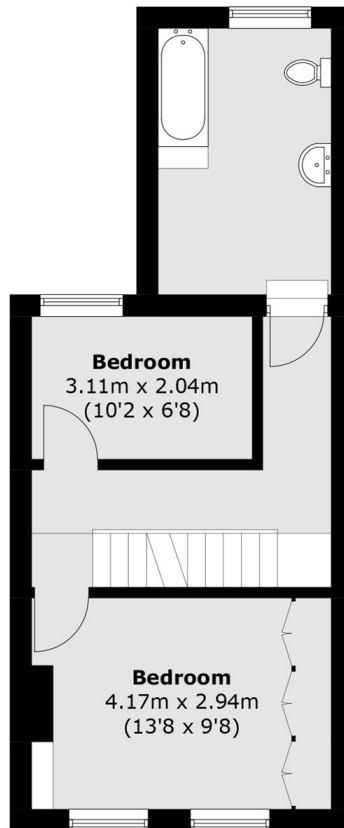




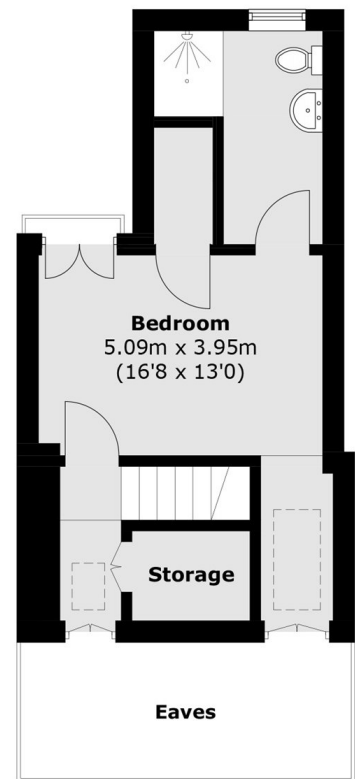
Cowper Road, London, SW19



Ground Floor



First Floor



Second Floor

Total area (approx.): 119.4 sq. m (1,285.3 sq. ft)
(Excluding Eaves)