

Goodwin Close, CR4

£2,450 Per calendar month

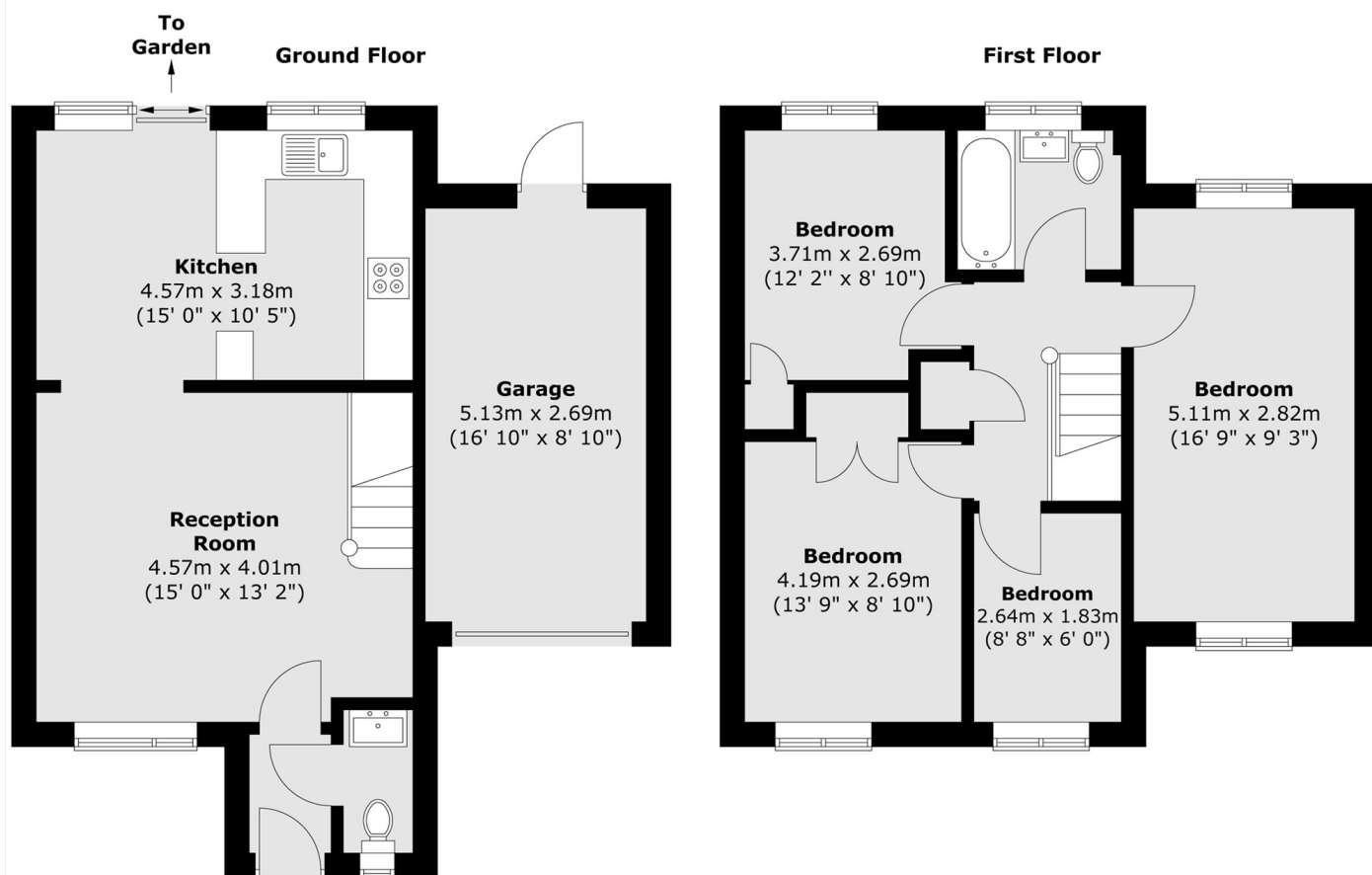
This four bedroom house with off street parking and private garage has a great entertaining space with a reception that leads to an open plan modern kitchen dining room, which over looks the private garden.

Goodwin Close is less then a mile to Colliers Wood Tandem Centre where you have an array of shops and restaurants to choose from, along with Colliers Wood Underground Station.

Features

- Four Bedroom House
- Eat In Kitchen Diner
- Off Street Parking
- Modern Bathroom
- Private Garage
- Private Garden

Goodwin Close, Mitcham, CR4



Total area (approx.) : 88 sq. m (947 sq. ft)
Total garage area (approx.) : 14.2 sq. m (153 sq. ft)