



Kohat Road, SW19
£925,000

Dexters



Kohat Road, SW19

An exceptionally well presented four bedroom Victorian family home with a southerly facing garden in the sought after Poets area of Wimbledon. The owners have renovated the house to a superb standard whilst retaining its original character

The ground floor has a bay-fronted reception room, complete with plantation shutters, fireplace and plenty of storage from the bespoke alcove units, which then provides access to a breathtaking open plan kitchen/dining room, complete with underfloor heating, integrated appliances and bi-fold doors which frame the landscaped garden perfectly.

The first floor has two double bedrooms complete with built in wardrobes, a third bedroom and separate family bathroom. On the second floor there's a generous master bedroom with built in wardrobes, eaves storage and a separate shower room.

Located within the catchment area for several primary schools and close to Haydons Road (Thameslink), Wimbledon (mainline and district line) and two Northern line stations. An early viewing is recommended

Features

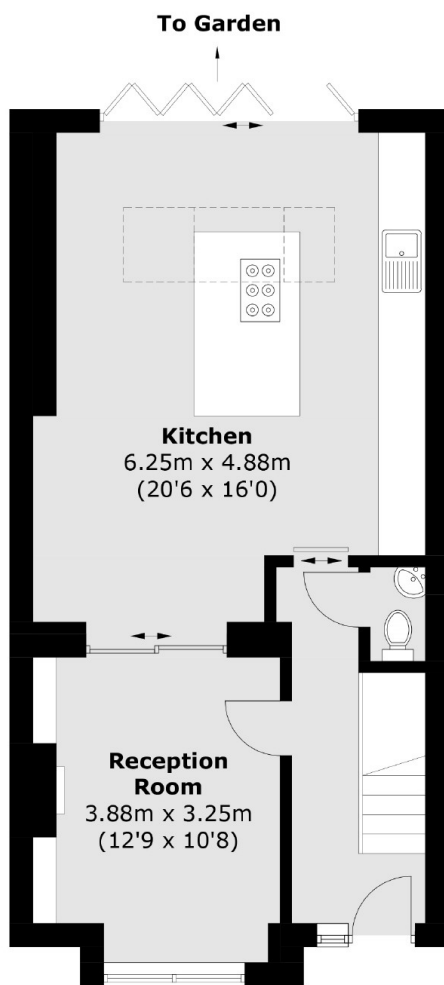
- Four Bedrooms
- Two Bathrooms and WC
- Southerly Facing Garden
- Exceptionally Renovated
- Character Features Throughout
- Close To Transport Links



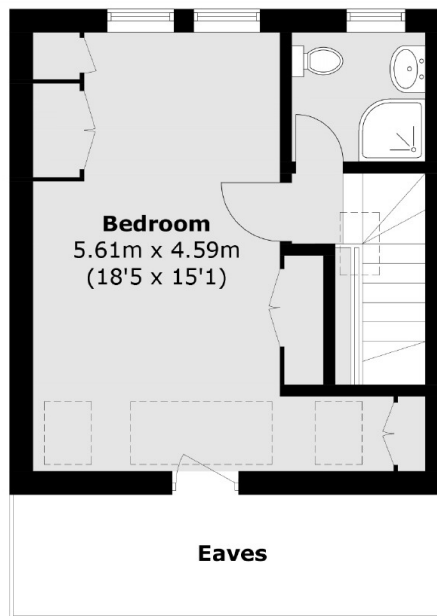




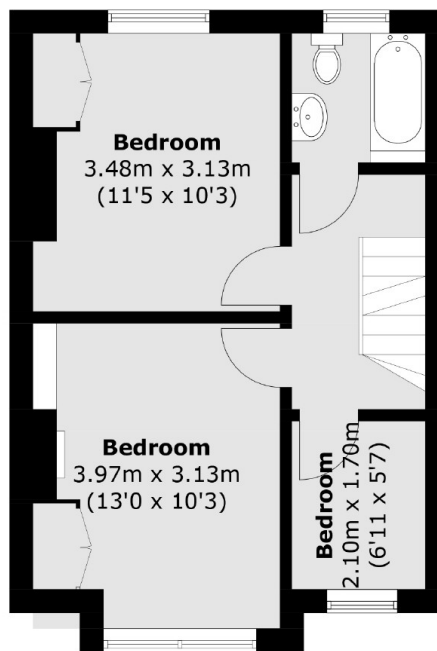
Kohat Road,
London, SW19



Ground Floor



Second Floor



First Floor

Total area (approx.): 116.9 sq. m (1,258.4 sq. ft)

Dexters

Wimbledon
12 The Broadway
London
SW19 1RF
Sales
020 8545 8580

Energy Rating: D. We aim to make our particulars both accurate and reliable. However they are not guaranteed; nor do they form part of an offer or contract. If you require clarification on any points then please contact us, especially if you're traveling some distance to view. Please note that appliances and heating systems have not been tested and therefore no warranties can be given as to their good working order.

RICS | Regulated
Estate Agent
and Letting Agent

dexters.co.uk