



Green Lane, SM4

£375,000

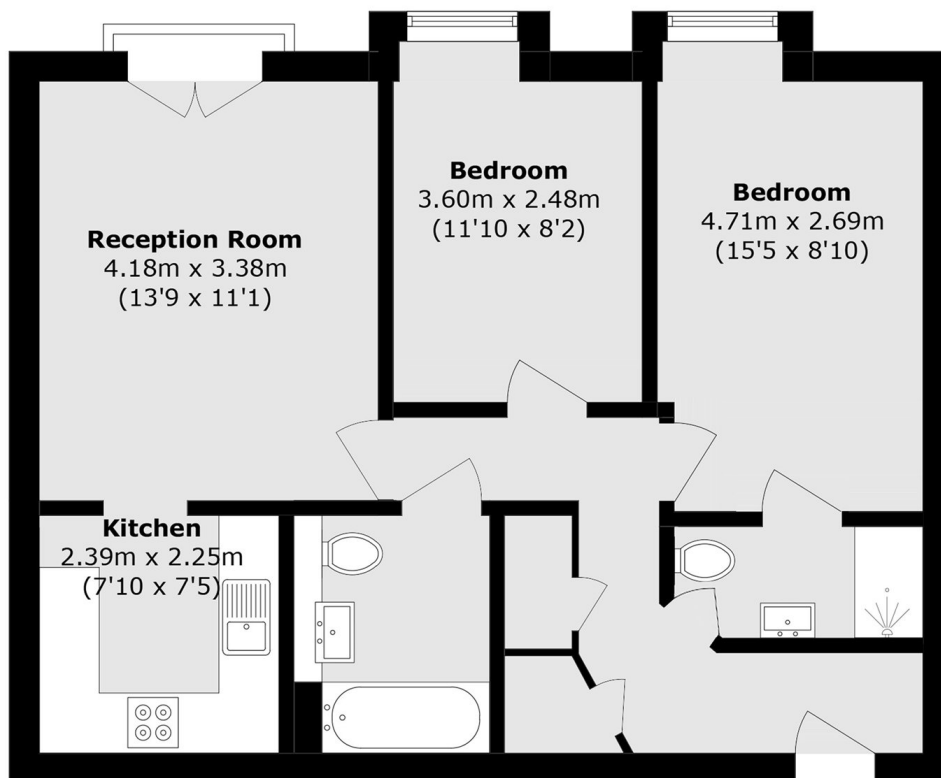
An opportunity to purchase this two double bedroom, two bathroom apartment in an exceptional location. Presented in excellent condition throughout, the property further benefits from allocated parking, a Juliette balcony and communal gardens.

Green Lane is located close to a number of local stations, with quick access into London by Bus, Rail and Tube. Other attractions and amenities close by are Morden Park, Cannon Hill Common, Morden Primary School, Merton Technical College and Merton Leisure Centre

Features

- Two Double Bedrooms
- Two Bathrooms
- Top Floor
- Great Condition
- Allocated Parking
- Excellent Transport Links

Green Lane,
Morden, SM4



Total area (approx.): 59.9 sq. m (644.7 sq. ft)

Dexters

Wimbledon
12 The Broadway
London
SW19 1RF
Sales
020 8545 8580

Energy Rating: C. We aim to make our particulars both accurate and reliable. However they are not guaranteed; nor do they form part of an offer or contract. If you require clarification on any points then please contact us, especially if you're traveling some distance to view. Please note that appliances and heating systems have not been tested and therefore no warranties can be given as to their good working order.

 **RICS** | Regulated
Estate Agent
and Letting Agent

[dexters.co.uk](https://www.dexters.co.uk)