



## Home Park Road, SW19

£1,150,000

An exceptional four bedroom, two bathroom end of terrace Victorian home. There's a private rear garden, a first floor roof terrace and the property is sold with no onward chain.

Located just around the corner from Wimbledon Village and Leopold Parade with its boutique cafés, shops and bars. Both Wimbledon Park and Wimbledon Town Centre are nearby, with District line and overground services.

### Features

- Four Bedrooms
- Two Bathrooms
- 47 Foot Living Space
- End Of Terrace
- No Onward Chain
- Garden And Large Terrace





## Home Park Road, SW19

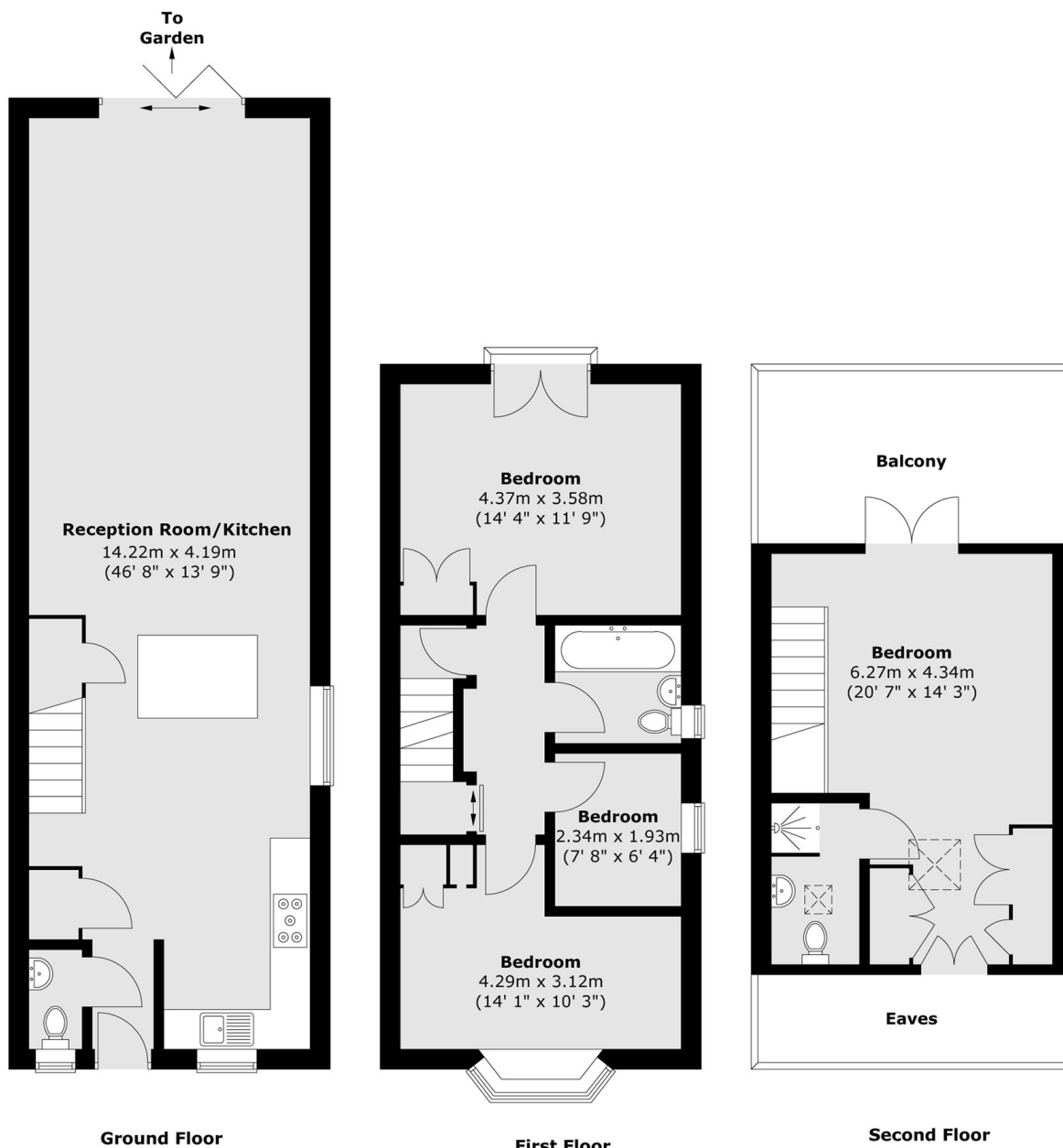
The ground floor has a large open plan reception/ kitchen and dining room, measuring just under forty-seven feet. The space is ideal for the family to come together or those parties you're famous for throwing! There's bifolding doors to the garden, laid with artificial turf and seating area.

The first floor has three bedrooms, two of which are large doubles, one has a Juliette balcony, and a single bedroom. There is a family bathroom, alongside stairs to the loft conversion, with another double bedroom with an ensuite bathroom and large terrace.

The house is located around the corner from the District Line, and equidistant from both Wimbledon Town Centre, Wimbledon Village and on the edge of Home Park with its tennis courts and boating lake.



# Home Park Road, London, SW19



Total area (approx.) : 132.6 sq. m (1427 sq. ft)  
(Excluding eaves)  
Total balcony area (approx.) : 10.5 sq. m (113 sq. ft)

## Dexters

Wimbledon  
12 The Broadway  
London  
SW19 1RF  
Sales  
020 8545 8580

Energy Rating: C. We aim to make our particulars both accurate and reliable. However they are not guaranteed; nor do they form part of an offer or contract. If you require clarification on any points then please contact us, especially if you're traveling some distance to view. Please note that appliances and heating systems have not been tested and therefore no warranties can be given as to their good working order.

**RICS** Regulated  
Estate Agent  
and Letting Agent

dexters.co.uk