

## Russell Road, SW19

### £565,000

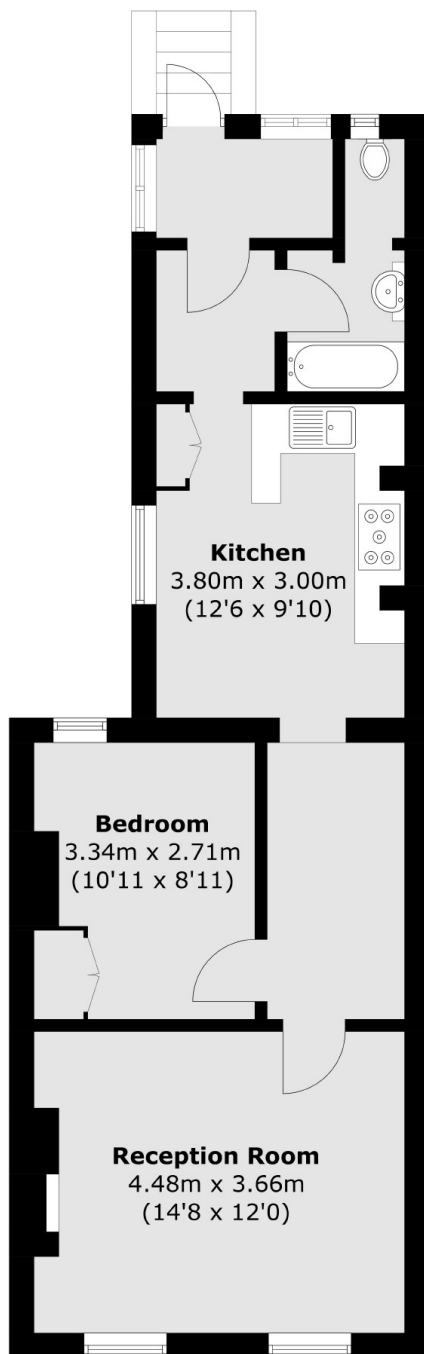
A two double bedroom, split level Victorian maisonette. The property has direct access to a communal garden and is offered to the market with no forward chain.

Russell Road is a quiet road with restricted traffic flow near to Wimbledon Broadway. Perfectly located for young families, being in close proximity to the superb Pelham, St Mary's & Merton Park Primary Schools. Wimbledon Village is also nearby.

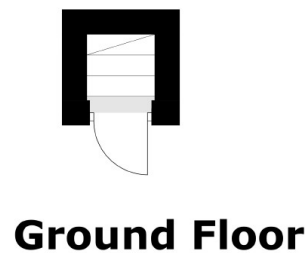
### Features

- Two Double Bedrooms
- Split Level Conversion
- Victorian
- Near 850 Square Feet
- Communal Garden
- No Onward Chain

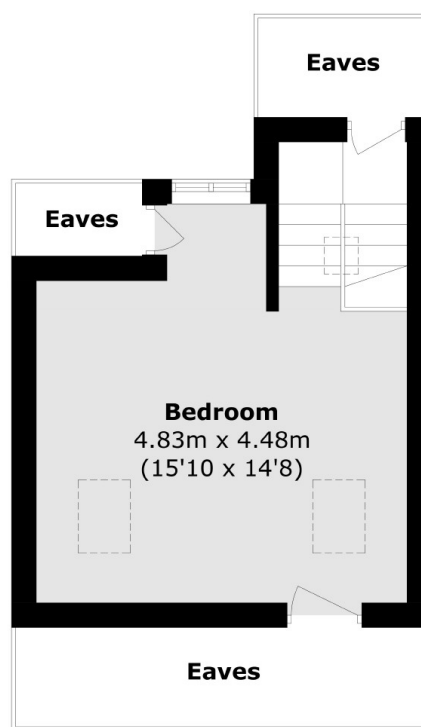
Russell Road,  
London, SW19



**First Floor**



**Ground Floor**



**Second Floor**

Total area (approx.): 76.5 sq. m (823.4 sq. ft)  
(Excluding Eaves)

**Dexters**

Wimbledon  
12 The Broadway  
London  
SW19 1RF  
Sales  
020 8545 8580

Energy Rating: D. We aim to make our particulars both accurate and reliable. However they are not guaranteed; nor do they form part of an offer or contract. If you require clarification on any points then please contact us, especially if you're traveling some distance to view. Please note that appliances and heating systems have not been tested and therefore no warranties can be given as to their good working order.

**RICS** | Regulated  
Estate Agent  
and Letting Agent

[dexters.co.uk](http://dexters.co.uk)