



The Downs, SW20

£2,000 Per calendar month

A modern, ground floor, two bedroom apartment with a separate living room and integrated kitchen with breakfast bar as well as a bathroom with shower over bath, there is a garage included.

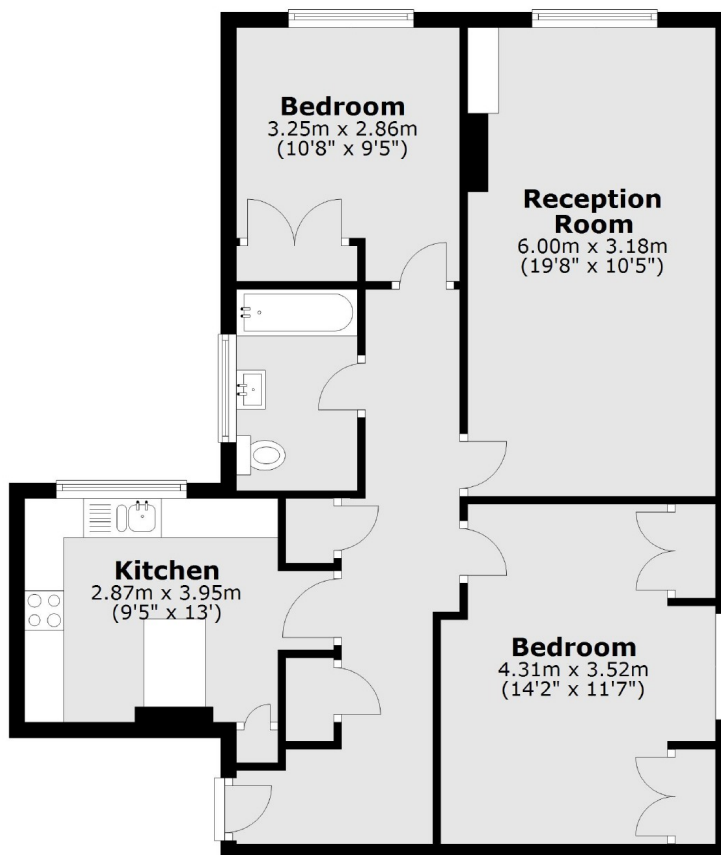
The Downs offers close proximity to Wimbledon Village and the Common as well as Wimbledon Centre with the station, a wide range of shopping facilities, restaurants and bars.

Features

- Two Bedrooms
- Modern Kitchen
- Integrated Kitchen
- Breakfast Bar
- Ground Floor
- Garage

The Downs, London, SW20

Ground Floor



Total area: approx. 71.9 sq. metres (773.5 sq. feet)