



## North Road, SW19

### £430,000

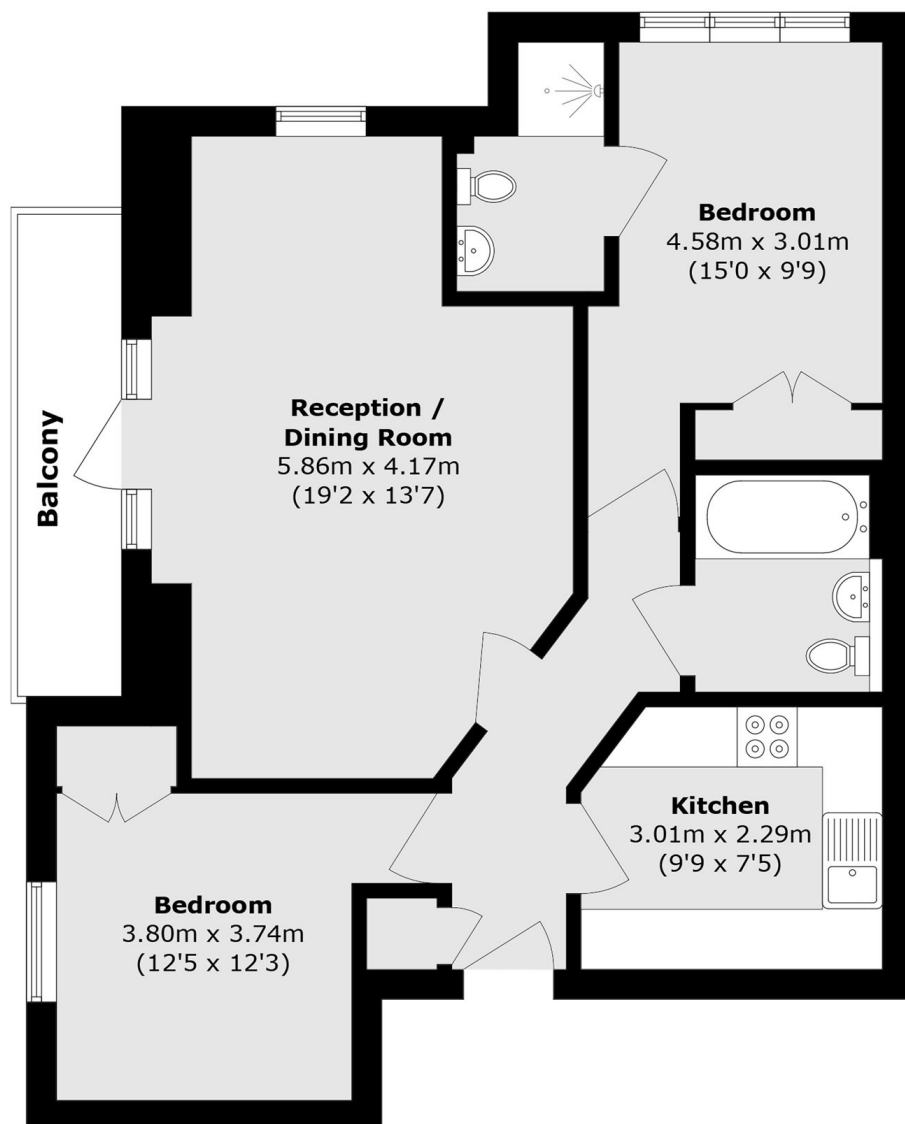
An outstanding example of a two double bedroom, two bathroom purpose built apartment, complete with a balcony with far reaching views, a lift, allocated off street parking and communal gardens.

North Road is a quiet street located close to Haydons Road train station and the northern line. Wimbledon Broadway is also close by, with a fantastic selection of shops, restaurants and district line tube.

### Features

- Two Double Bedrooms
- Two Bathrooms
- Allocated Parking
- Far Reaching Views
- Private Balcony
- Communal Gardens

# North Road, London, SW19



Total area (approx.): 70.4 sq. m (757.8 sq. ft)

Balcony area (approx.): 5.0 sq. m (53.8 sq. ft)