

Kingston Road, SW20

£400,000

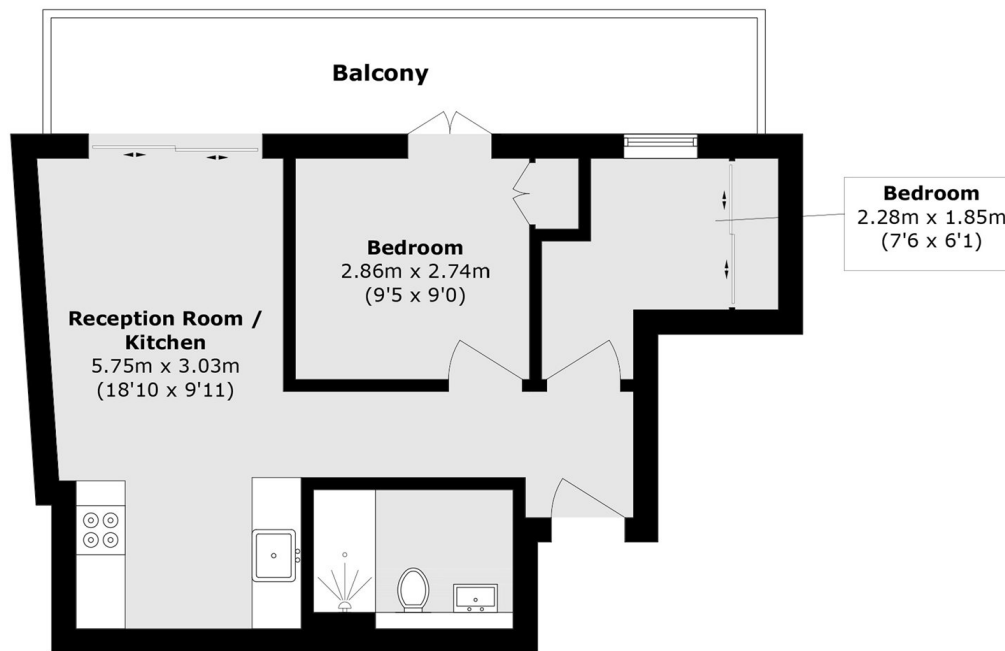
A two bedroom penthouse apartment, complete with a lift in the building and benefiting from one of the only flats in the building to have a large, private terrace. The property has a long lease and is offered to the market with no forward chain.

Kingston Road is in a popular location conveniently located for Wimbledon Town Centre. It is close to the very popular Wimbledon Chase Primary School as well as the green open space of Dundonald Park

Features

- Two Bedrooms
- Long Lease
- Huge Private Terrace
- Immaculate Finish Throughout
- Great Transport Links
- Modern Development

Kingston Road, London, SW20



Total area (approx.): 43.1 sq. m (463.9 sq. ft)
Balcony: 12.8 sq. m (137.8 sq. ft)