



Graham Street, N1

£660 Per week

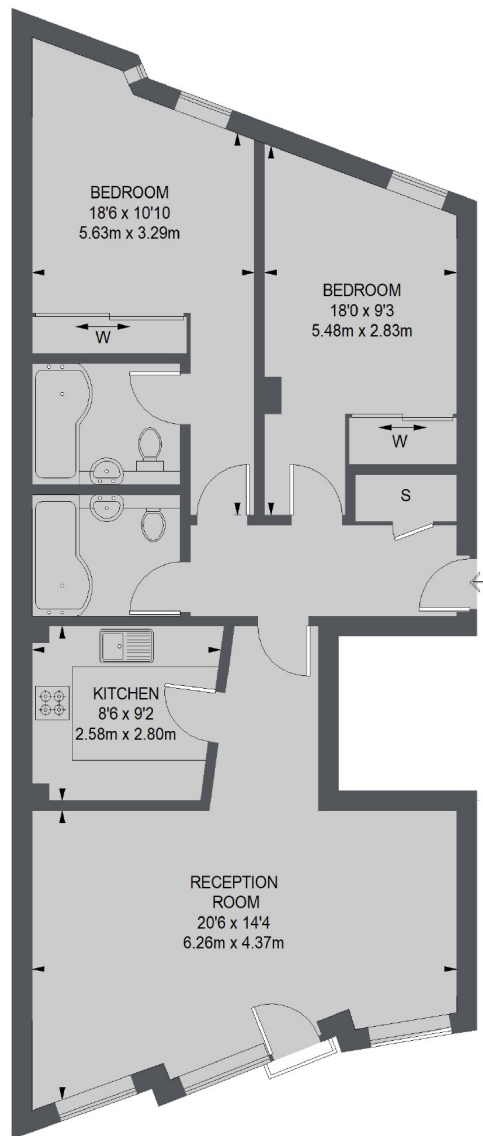
A very well presented modern apartment with two double bedrooms and two bathrooms and 24 hour concierge. It has a spacious living room with great views of Regent's Canal, a modern kitchen and is available unfurnished.

Crystal Wharf is located on Graham Street which is within a short walk to Angel station (Northern Line). Upper Street with a wide variety of shops, bars and restaurants is also just a few minutes away.

Features

Two Double bedrooms
Two Bathrooms
Regents Canal View
24 Hour Concierge
Unfurnished
Modern Development

Graham Street, London, N1



FIRST FLOOR

TOTAL APPROX. FLOOR AREA
866 SQ. FT. (80.60 SQ. M.)

Contact

To arrange a viewing call our office on the number below or visit our website.



Energy Rating: C. We aim to make our particulars both accurate and reliable. However they are not guaranteed; nor do they form part of an offer or contract. If you require clarification on any points then please contact us, especially if you're traveling some distance to view. Please note that appliances and heating systems have not been tested and therefore no warranties can be given as to their good working order.