

Islington Square, N1

£750 Per week

Available immediately, a stunning brand new two bedroom apartment in the Islington Square development with a spacious living room and modern open plan kitchen and two luxury bathrooms.

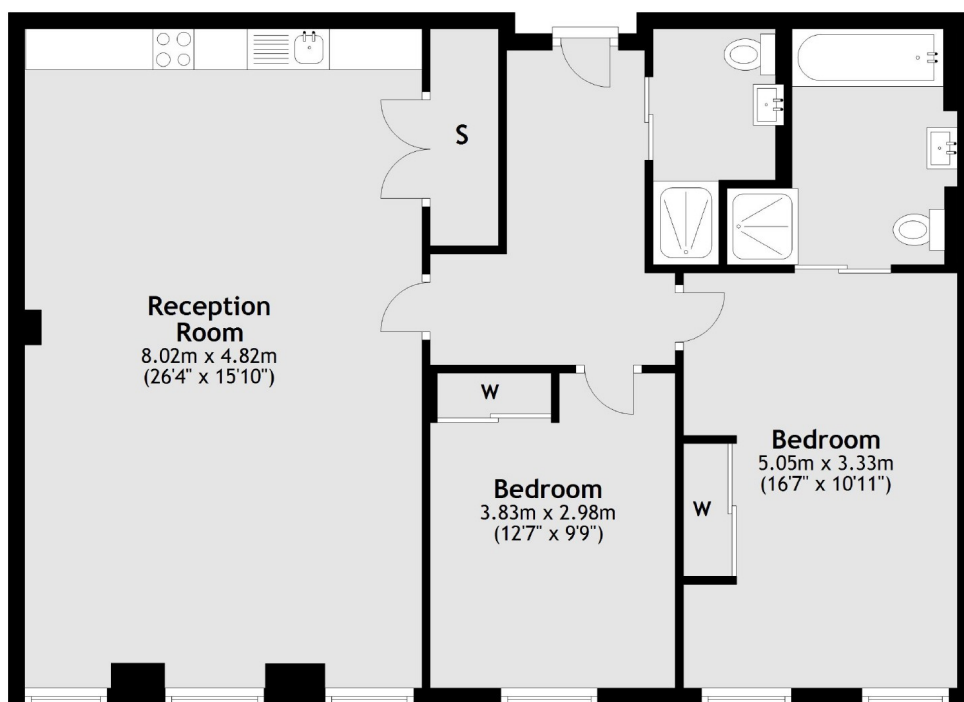
Esther Anne Place is part of the brand new Islington Square development and is located just off of the vibrant Upper Street with an array of shops, restaurants, cafes and nightlife and is less than half a mile from Angel and Highbury & Islington stations.

Features

Brand New Development
24 Hour Concierge
Parking Space Available
Two Double Bedrooms
Two Bathrooms
Communal Roof Gardens

Esther Anne Place, London, N1

Third Floor



Total area: approx. 90.6 sq. metres (974.8 sq. feet)

Contact

To arrange a viewing call our office on the number below or visit our website.



Energy Rating: C. We aim to make our particulars both accurate and reliable. However they are not guaranteed; nor do they form part of an offer or contract. If you require clarification on any points then please contact us, especially if you're traveling some distance to view. Please note that appliances and heating systems have not been tested and therefore no warranties can be given as to their good working order.