

Barnsbury Street, N1

£600 Per week

A spacious two double bedroom, two bathroom Victorian conversion set over three floors. The apartment has an open plan reception room and modern kitchen, wooden flooring throughout and a balcony on the top floor.

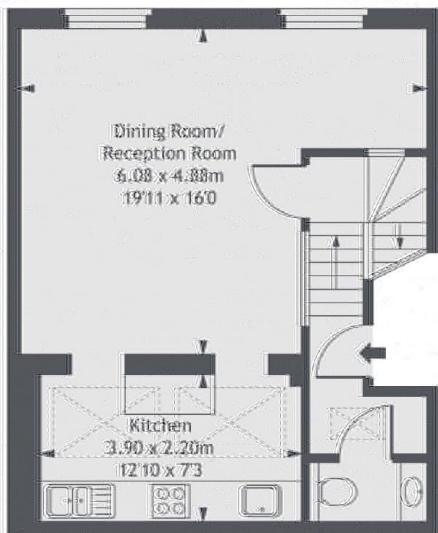
Barnsbury Street is a residential road off Upper Street in the heart of Angel. It is a short walk to Highbury and Islington Station which services the National rail, London Overground and the Victoria Line.

Features

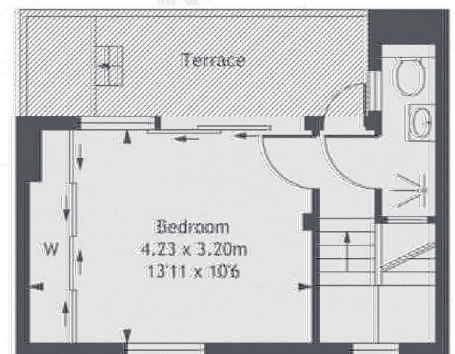
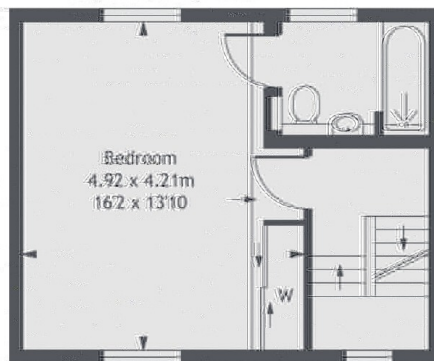
- Two Double Bedrooms
- Two Bathrooms
- Excellent Location
- Wooden Floors
- Split Level
- Modern Kitchen

Barnsbury Street, London, N1

First Floor



Second Floor



Gross Internal Area 998 sq ft (92.70 sq m)
Terrace Area 82 sq ft (7.66 sq m)

Contact

To arrange a viewing call our office on the number below or visit our website.



Energy Rating: D. We aim to make our particulars both accurate and reliable. However they are not guaranteed; nor do they form part of an offer or contract. If you require clarification on any points then please contact us, especially if you're traveling some distance to view. Please note that appliances and heating systems have not been tested and therefore no warranties can be given as to their good working order.