



St. Pauls Road, N1

£350,000

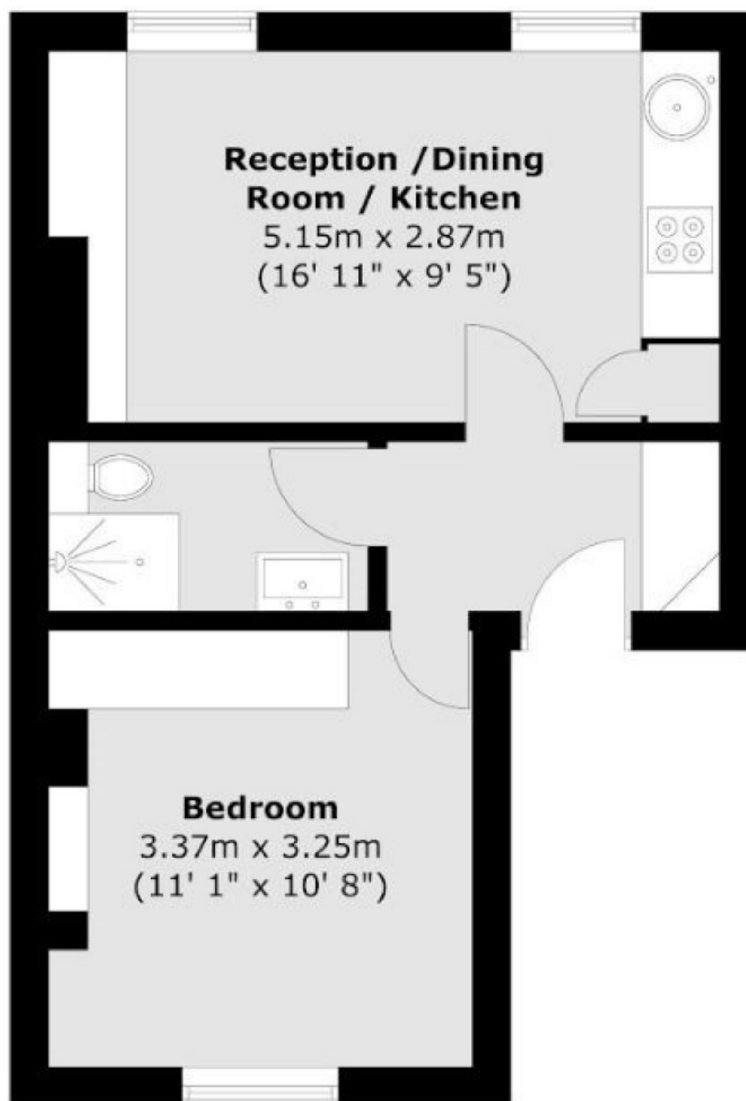
A bright and spacious one-bedroom apartment in a charming period conversion, featuring an open-plan living and kitchen area. The property is ideally located near Highbury & Islington station, with excellent transport links and local amenities nearby.

Highbury & Islington Station (Victoria Line, Overground, National Rail) Approx 0.4 miles, Essex Road Station (National Rail) Approx 0.4 miles and multiple bus routes nearby with connections to the City and West End.

Features

- Period Conversion
- One Bed
- Open Plan
- Close to Transport
- Chain Free

St. Pauls Road, London, N1



Total area (approx.) : 33.7 sq. m (363 sq. ft)

Dexters

Islington
76 Upper Street
London
N1 0NU
Sales
020 7483 6373

Energy Rating: D. We aim to make our particulars both accurate and reliable. However they are not guaranteed; nor do they form part of an offer or contract. If you require clarification on any points then please contact us, especially if you're traveling some distance to view. Please note that appliances and heating systems have not been tested and therefore no warranties can be given as to their good working order.

 **RICS** | Regulated
Estate Agent
and Letting Agent

[dexters.co.uk](https://www.dexters.co.uk)