



## Albion Road, N16

### £475,000

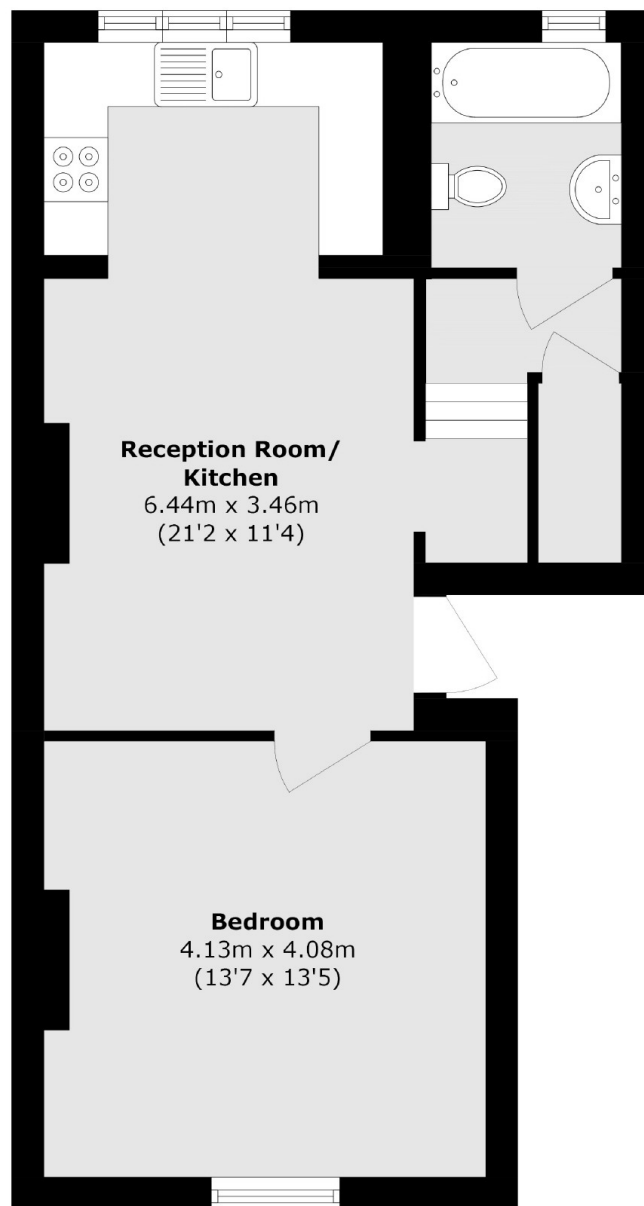
An immaculately presented one bedroom flat on the raised ground floor of a Victorian conversion. This home has high ceilings throughout and the open plan kitchen/ living room is perfect for entertaining.

Located under a quarter of a mile from Newington Green and half a mile from Church street, this property has an abundance of Restaurants, shops and cafés close by. The nearest Station is Canonbury Overground just over half a mile walk.

### Features

- Victorian Conversion
- Raised Ground Floor
- Open Plan
- High Ceilings
- One Bedroom
- Share of Freehold

# Albion Road, London, N16



Total area (approx.): 48.9 sq. m (526.3 sq. ft)

## Dexters

Islington  
76 Upper Street  
London  
N1 0NU  
Sales  
020 7483 6373

Energy Rating: C. We aim to make our particulars both accurate and reliable. However they are not guaranteed; nor do they form part of an offer or contract. If you require clarification on any points then please contact us, especially if you're traveling some distance to view. Please note that appliances and heating systems have not been tested and therefore no warranties can be given as to their good working order.

 **RICS** | Regulated  
Estate Agent  
and Letting Agent

[dexters.co.uk](https://www.dexters.co.uk)