



## Basire Street, N1

### £825,000

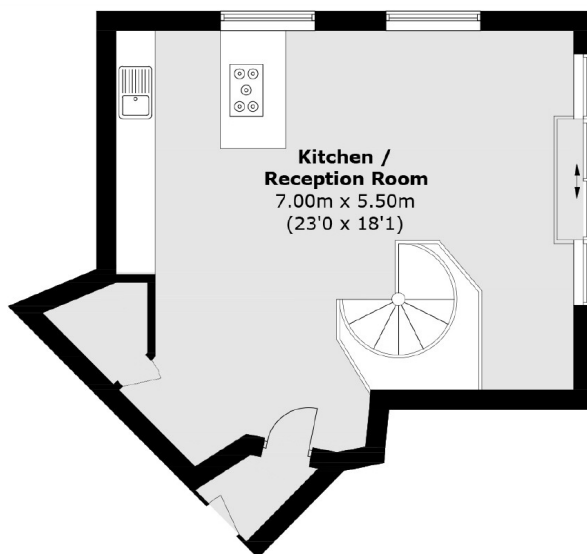
A split level two bedroom apartment on the second and third floor of this modern building. With dual aspect windows in the open plan living / kitchen this apartment is flooded with natural light.

Situated on the popular Basire Street, this property boasts excellent transport links, including numerous bus routes to the City and West End. The local underground stations, Angel and Highbury & Islington (serving the Northern Line, Victoria Line, and Overground), are easily accessible. Essex Road Station (National Rail) and Kings Cross International are also nearby.

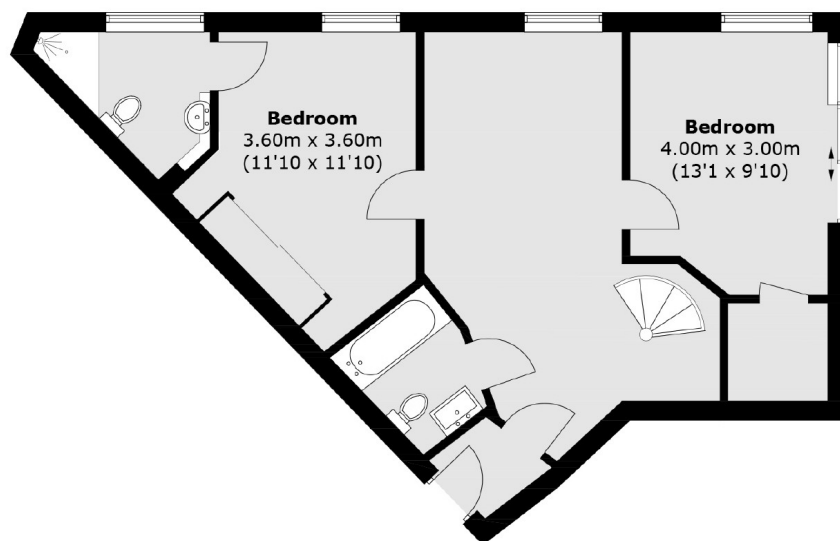
### Features

- In Excess 1000sqft
- Spilt Level
- Lift Access
- Two Bathrooms
- Open Plan Living
- Dual Aspect

# Basire Street, London, N1



**Third Floor**



**Second Floor**

Approx Internal Area: 103.2 sq. m (1,110.8 sq. ft)