

## Cludesley Road, N1

### £1,700,000

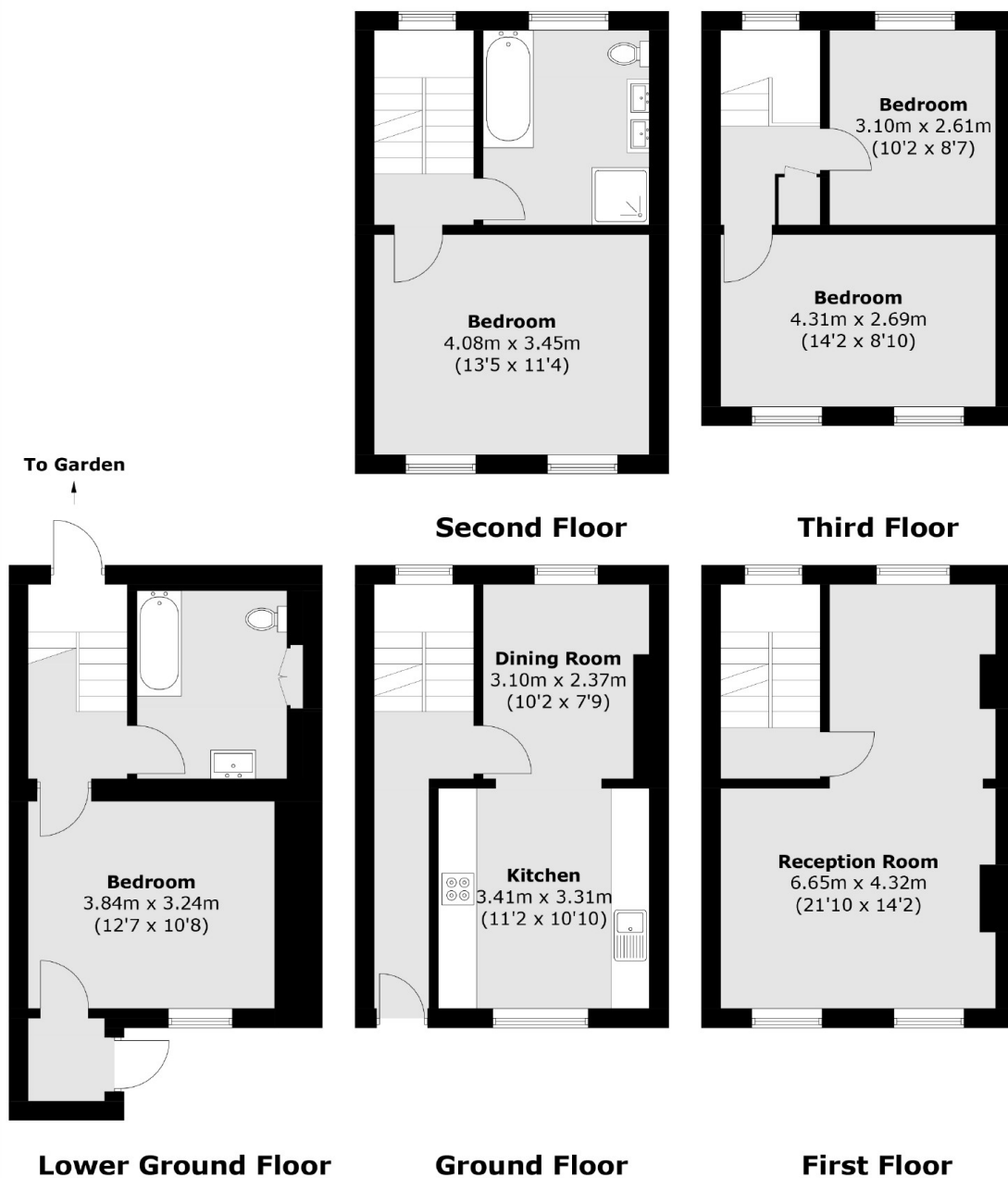
A Grade II listed Georgian home in prime-Barnsbury is offered to the market with no onward chain. The ground floor features a stylish kitchen and dining area, with stairs leading down to the lower ground floor, which includes a bedroom, bathroom, and access to a neatly paved rear garden. On the first floor, you'll find the reception room, while the second floor hosts the principal bedroom and bathroom. The third floor offers two additional bedrooms.

Cludesley Road is a particularly wide and attractive residential road in the heart of the Barnsbury Conservation Area. The property is ideally located between Liverpool Road and Barnsbury Road, affording easy access to Angel (Northern Line), Highbury & Islington (Victoria Line & National Rail) and King's Cross/St Pancras is only one stop away for national and European travel. Upper Street's vibrant shops, restaurants, and bars are just a short walk away, while acclaimed local pubs such as The Albion and The Drapers Arms are close at hand.

### Features

- Grade II Listed
- Freehold
- Four Bedrooms
- Two Bathrooms
- West Facing Patio Garden
- Chain Free

# Cloudesley Road, London, N1



Total area (approx.): 140.3 sq. m (1,510.0 sq. ft)

## Dexters

Islington  
76 Upper Street  
London  
N1 0NU  
Sales  
020 7483 6373

Energy Rating: D. We aim to make our particulars both accurate and reliable. However they are not guaranteed; nor do they form part of an offer or contract. If you require clarification on any points then please contact us, especially if you're traveling some distance to view. Please note that appliances and heating systems have not been tested and therefore no warranties can be given as to their good working order.

 **RICS** | Regulated  
Estate Agent  
and Letting Agent

[dexters.co.uk](https://www.dexters.co.uk)