



## Claremont Close, N1

£595,000

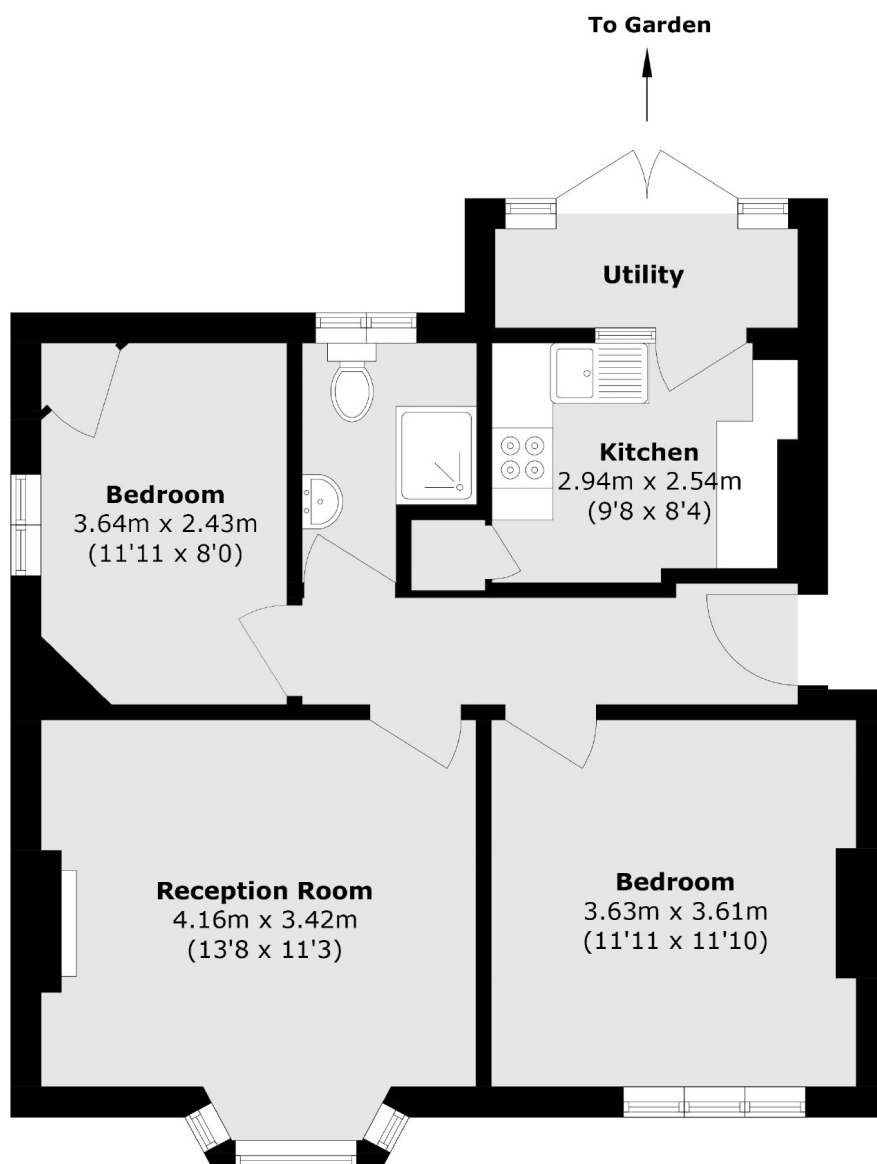
A spacious two-bedroom ground floor apartment, perfectly located in the heart of Angel on a quiet cul-de-sac. This well-proportioned flat offers a generously sized master bedroom, second double bedroom with built in storage, family bathroom and a bright reception room. The separate kitchen with utility space leads beautifully out through double doors to the mature shared gardens.

Tucked away within the tranquil New River Conservation Area, the flat is moments from the vibrant shops, restaurants, and cafés of Upper Street and Exmouth Market. Excellent transport links are nearby, including Angel Underground Station (Northern Line), Kings Cross, and St Pancras International offering fast access across London and beyond into mainland Europe.

### Features

Two Bedrooms  
One Bathroom  
Separate Kitchen  
Communal Gardens  
Ground Floor  
Chain Free

# Claremont Close, London, N1



Total area (approx.): 61.3 sq. m (659.8 sq. ft)