



Baldwin Terrace, N1

£4,200 Per week

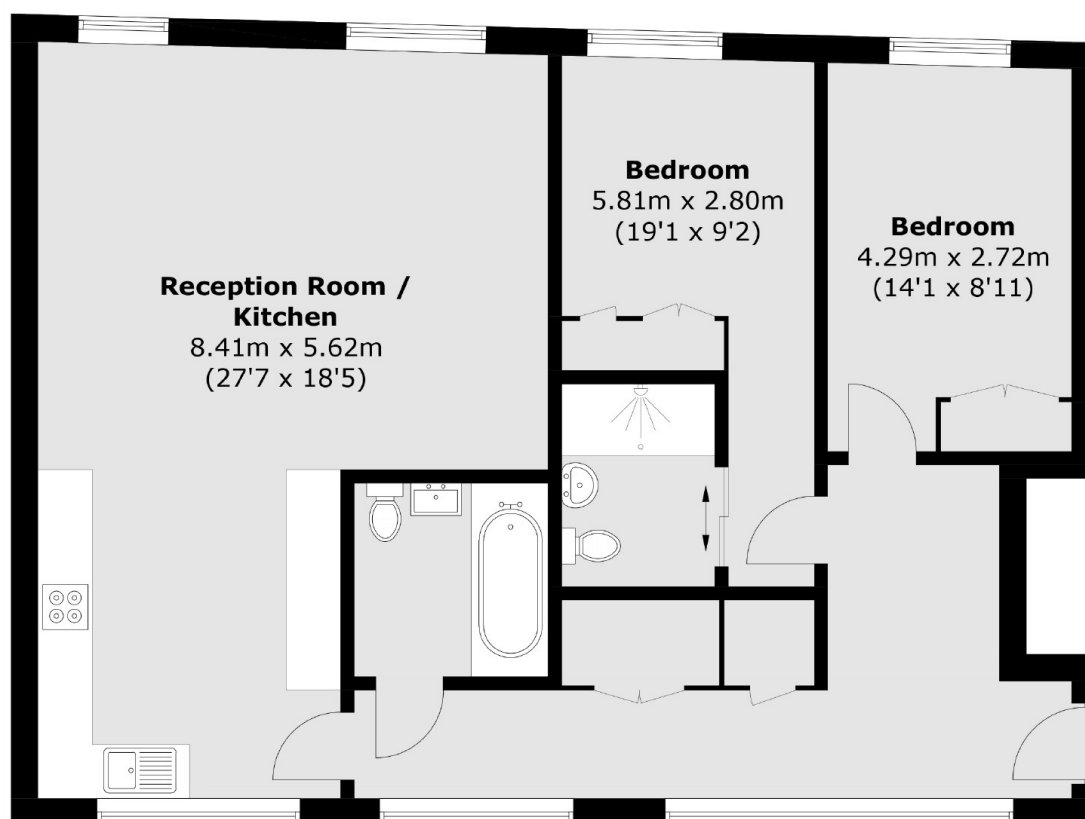
A two bedroom apartment with incredible views over Regent's canal and the City Of London. This flat has hard wood flooring throughout, a modern open plan living and kitchen area, plenty of storage throughout with a utility cupboard and the apartment is south facing.

Baldwin Terrace is a short walk to Angel Station and only a 15 minute walk into the City. The apartment is close to the many shops and amenities which Upper Street has to offer.

Features

- Two Bathroom
- Two Bedroom
- Canal & City Views
- Modern Interior Throughout
- Lift Access
- Under Floor Heating

Baldwin Terrace, London, N1



Total area (approx.): 92.5 sq. m (995.7 sq. ft)

Dexters

Islington
76 Upper Street
London
N1 0NU
Lettings
020 7483 6374

Energy Rating: . We aim to make our particulars both accurate and reliable. However they are not guaranteed; nor do they form part of an offer or contract. If you require clarification on any points then please contact us, especially if you're traveling some distance to view. Please note that appliances and heating systems have not been tested and therefore no warranties can be given as to their good working order.

 **RICS** | Regulated
Estate Agent
and Letting Agent

dexters.co.uk