



Balls Pond Place, N1

£399,999

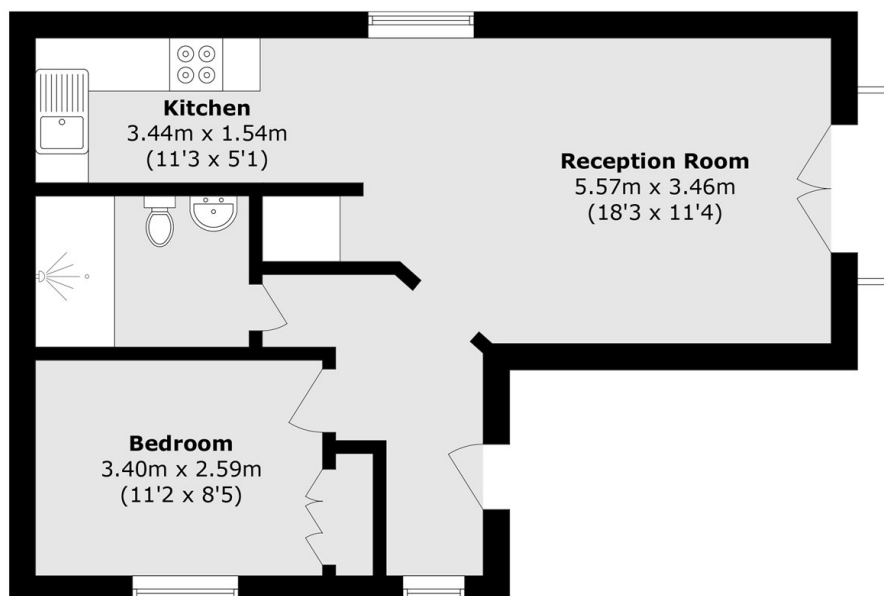
An immaculately presented, modern one bedroom apartment set on the second floor, with an open plan kitchen and living area, wooden flooring and integrated appliances.

A third of a mile to Newington Green and New River Walk, with Canonbury overground station a similar distance. Highbury and Islington station (Victoria line and Overground) is three quarters of a mile away.

Features

One Bedroom
Open Plan Kitchen
Juliette Balcony
Second Floor

Balls Pond Place, London, N1



Total area (approx.): 44.5 sq. m (478.9 sq. ft)