



## Essex Road, N1

### £875,000

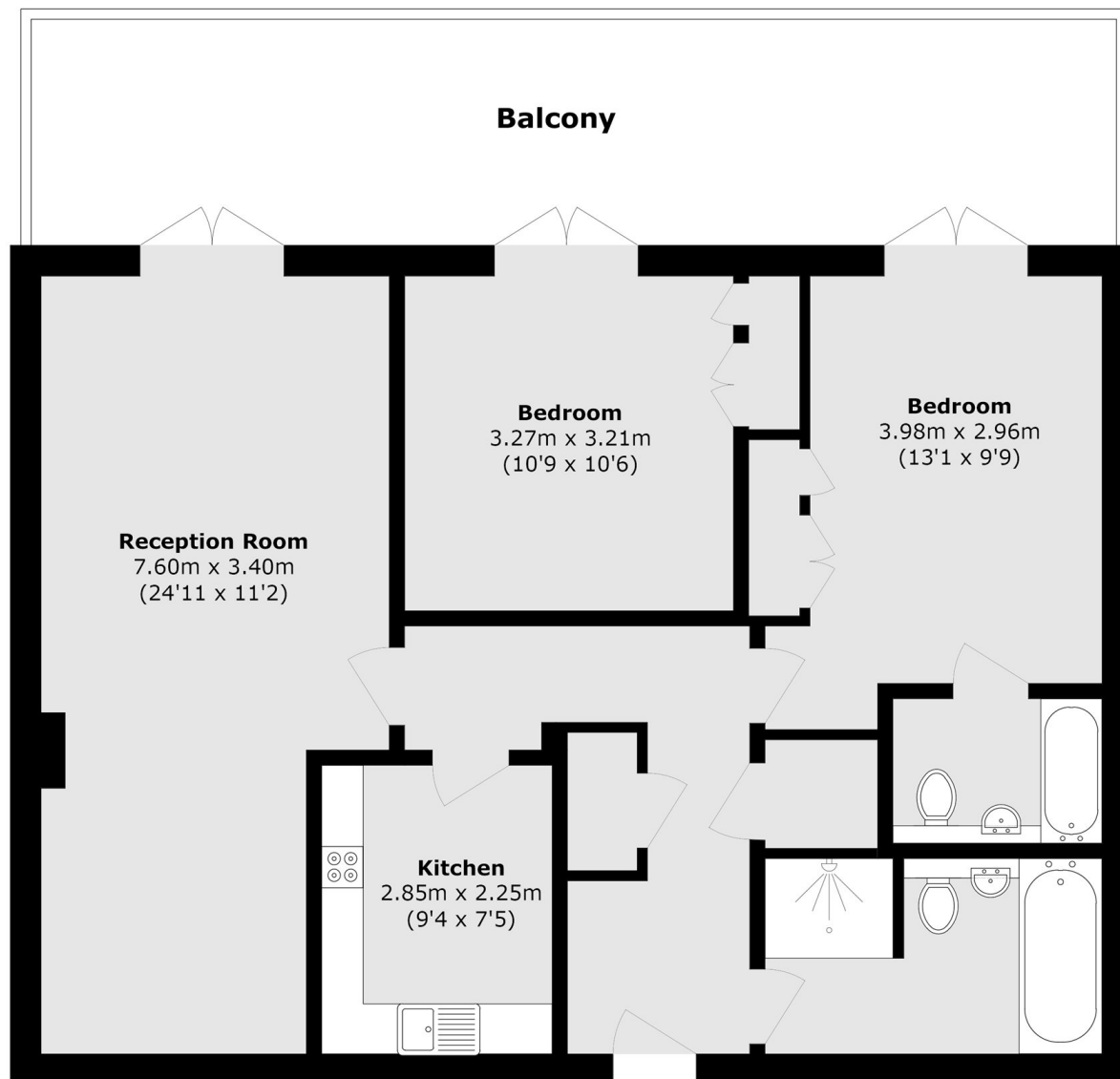
A two bedroom, two bathroom apartment in the ideally located Angel on The Green development. This ground floor flat has a large private terrace overlooking the manicured communal garden, a 24hr concierge and allocated underground parking.

Located in the heart of Angel and tucked away off of Islington's vibrant Upper Street, known for its bars, cafés, restaurants, and boutique shops, the property offers access to excellent transport links. Angel Station is under half a mile away, as well as convenient connections from Highbury & Islington Station and Essex Road Station.

### Features

- Central Angel
- 24h Concierge
- Private Terrace
- Underground Parking
- Communal Garden
- Long Lease

# Essex Road, London, N1



Total area (approx.): 78.7 sq. m (847.1 sq. ft)

Balcony area (approx.): 23.4 sq. m (251.8 sq. ft)