



New North Road, N1

£6,500 Per calendar month

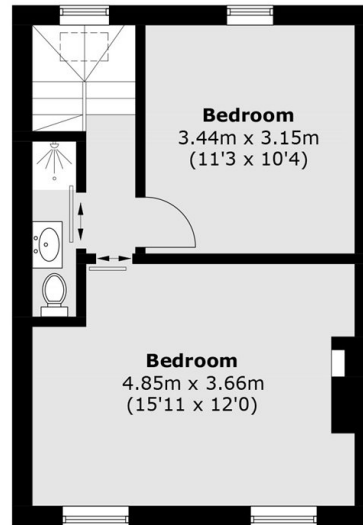
This beautifully renovated 1134 sq. Ft. Maisonette is arranged over three floors within an elegant Victorian terrace conversion. Architect-designed and finished to a high standard throughout, the home offers three bedrooms, two bathrooms, and a charming west-facing garden, combining period character with modern comfort.

New North Road is a sought-after location with excellent links to the City, Shoreditch, and Upper Street. Regent's Canal and Shoreditch Park are just a short distance away, while vibrant cafés, restaurants, and boutique shops are on the doorstep. Old Street (0.8 miles) and Angel (0.9 miles) stations provide superb transport connections, with nearby bus routes adding further convenience.

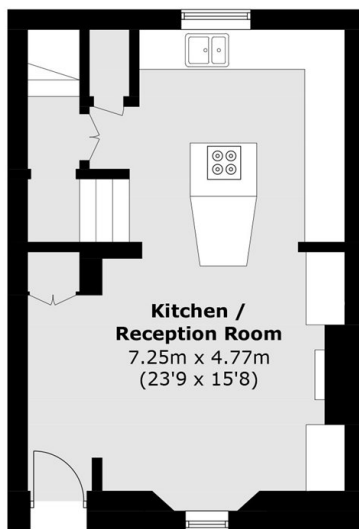
Features

- Three Double Bedrooms
- Two Bathrooms
- Underfloor Heating
- Period Features
- Prime Location
- Furnished

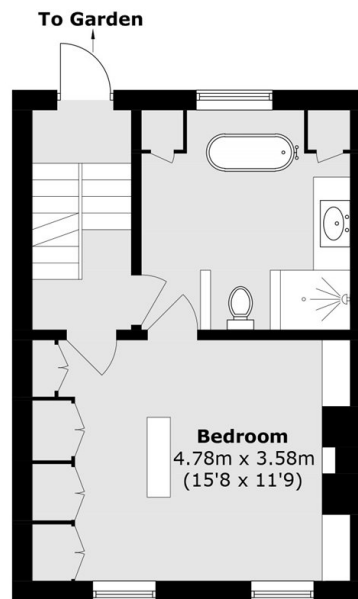
New North Road, London, N1



Second Floor



Ground Floor



First Floor

Total area (approx.): 105.35 sq. m (1134 sq. ft)