



Highbury New Park, N5

£2,400 Per week

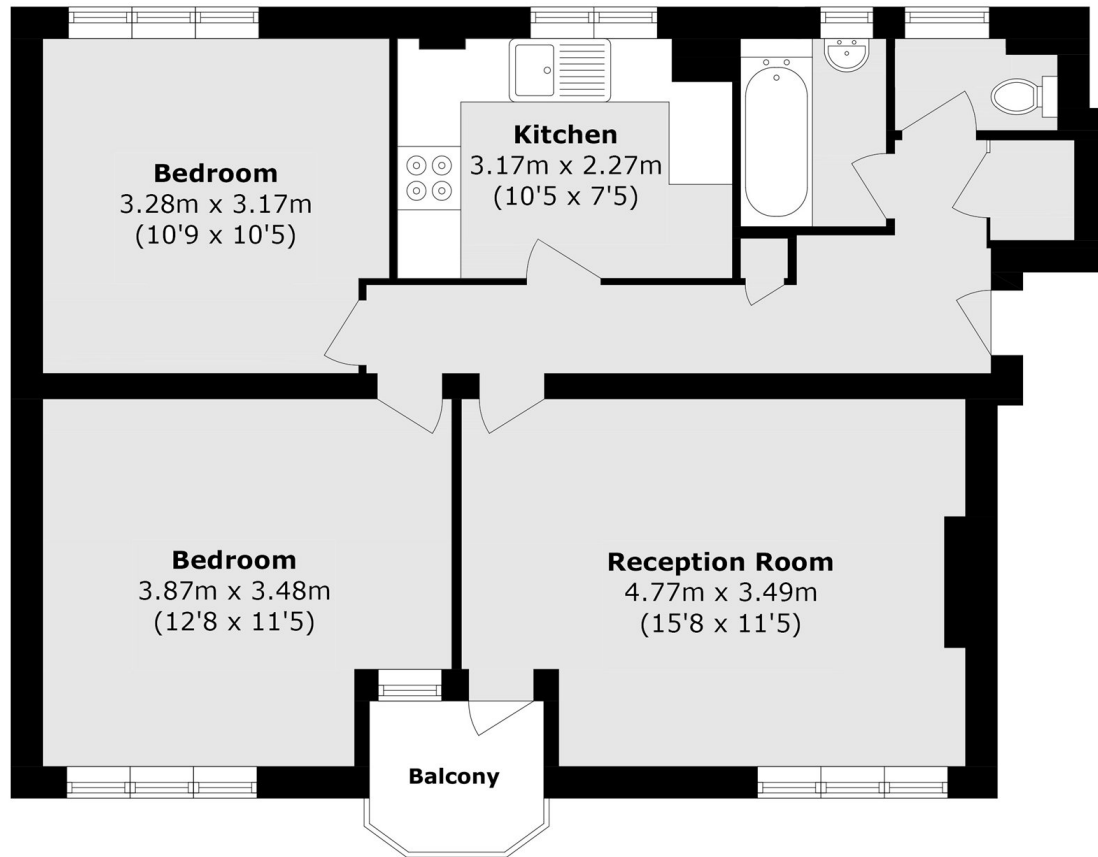
A two bedroom flat situated in a well kept block with original period features, shared outdoor space and a separate kitchen/living room. The property has lots of storage and is available furnished.

This property is ideally located for the shops, cafes and restaurants on Highbury Barn. The closest tube station is Arsenal on the Piccadilly Line and Highbury & Islington for the overground. Buses run frequently along Highbury Grove and Blackstock Road.

Features

- Two Bedroom
- One Bathroom
- Ground Floor
- Bright Flat
- Separate Living Room
- Unfurnished

Highbury New Park, London, N5



Total area (approx.): 60.4 sq. m (650.1 sq. ft)
Balcony area (approx.): 2.2 sq. m (23.6 sq. ft)