



## Shepperton Road, N1

### £700,000

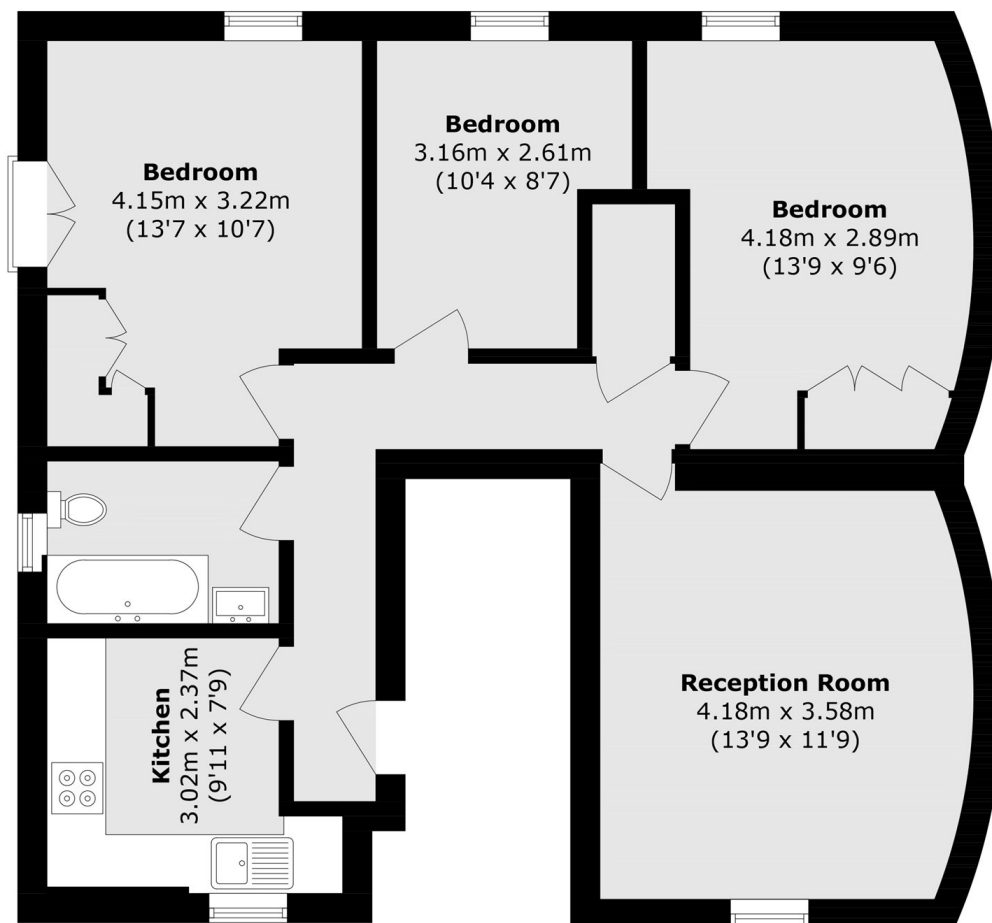
A well-presented three double bedroom flat arranged across the first floor of this characterful conversion. This property benefits from a well-proportioned reception room with space for dining, a separate kitchen, offering excellent lateral living and is sold with a share of the freehold.

Set on the charming tree-lined Shepperton Road, the property enjoys transport links and easy access to the amenities, shops, bars and restaurants of De Beauvoir, Hoxton, Shoreditch and Angel, as well as nearby parks and canals. Angel and Old Street stations (Northern Line) are both 1 mile away and Essex Road Station (National Rail) is also nearby.

### Features

- Three Bedrooms
- Share of Freehold
- Lateral Living
- Separate Kitchen
- First Floor
- Ample Storage Space

# Shepperton Road, London, N1



Total area (approx.): 71.0 sq. m (764.2 sq. ft)