



Highbury New Park, N5

£750,000

A large one bedroom apartment located on the first floor of this impressive Victorian building. Situated on the desirable tree-lined Highbury New Park this wonderful home is comprised of a grand reception room with high ceilings, vast windows, feature fireplace and private garden. To the rear of the property, overlooking the gardens below, is a sizeable bedroom with an en-suite.

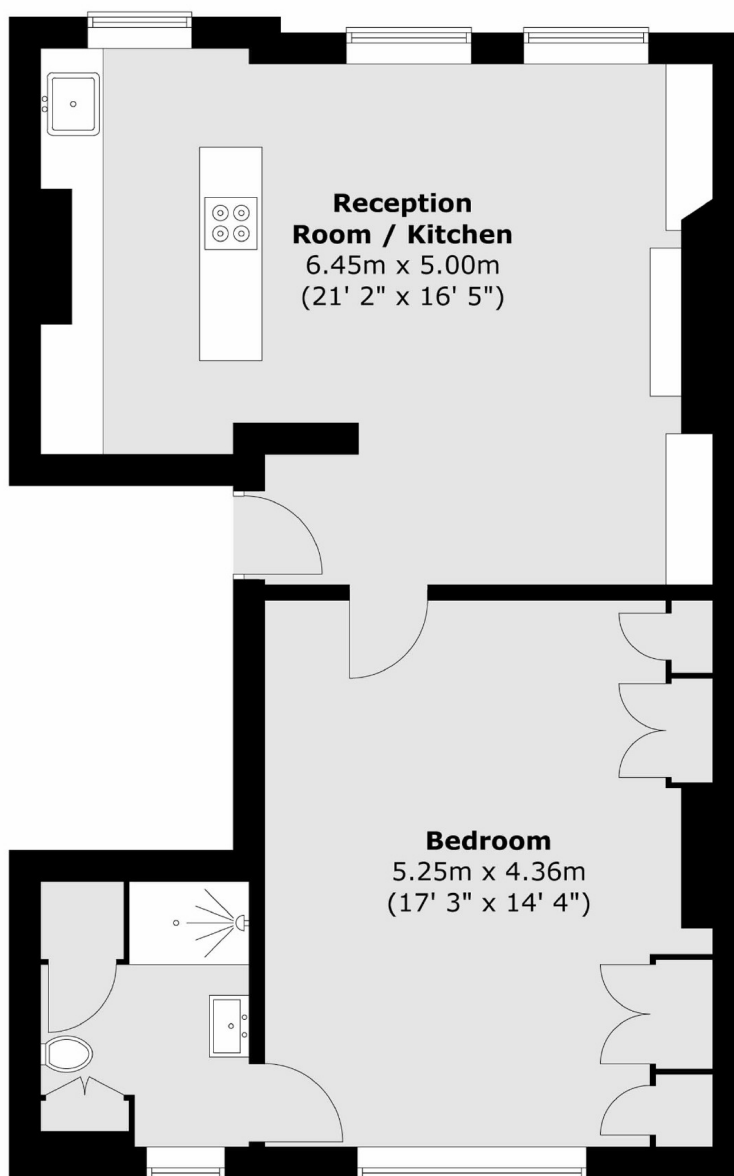
The location offers convenient access to the greenery and amenities of Clissold Park, along with renowned shops at Highbury Barn. Transport links can be found at both Canonbury station (London Overground) and Highbury & Islington station (National Rail & Victoria Line).

Features

- Open Plan
- Victorian Villa
- Share Of Freehold
- Private West Facing Garden

Highbury New Park, London, N5

First Floor



Total area (approx.) : 61 sq. m (657 sq. ft)

Dexters

Islington
76 Upper Street
London
N1 0NU
Sales
020 7483 6373

Energy Rating: . We aim to make our particulars both accurate and reliable. However they are not guaranteed; nor do they form part of an offer or contract. If you require clarification on any points then please contact us, especially if you're traveling some distance to view. Please note that appliances and heating systems have not been tested and therefore no warranties can be given as to their good working order.

 **RICS** | Regulated
Estate Agent
and Letting Agent

[dexters.co.uk](https://www.dexters.co.uk)