



Highbury New Park, N5

£1,200,000

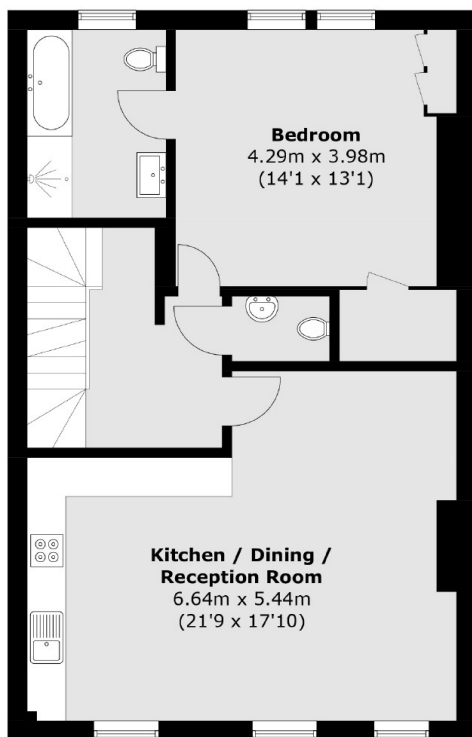
Set across the top two floors of a Victorian conversion, is this beautiful three bedroom, two bathroom home in prime N5. With close to 1,400sqft of living space, this spacious apartment offers contemporary finishes in a traditional setting.

Located on one of Highbury's most desirable streets, Highbury New Park is ideally situated for green space, transport links and local amenities alike. Clissold Park is less than a quarter mile away, and Canonbury (Overground) is a half mile walk away. Highbury and Islington (Victoria, Great Northern and Overground) station is also within walking distance.

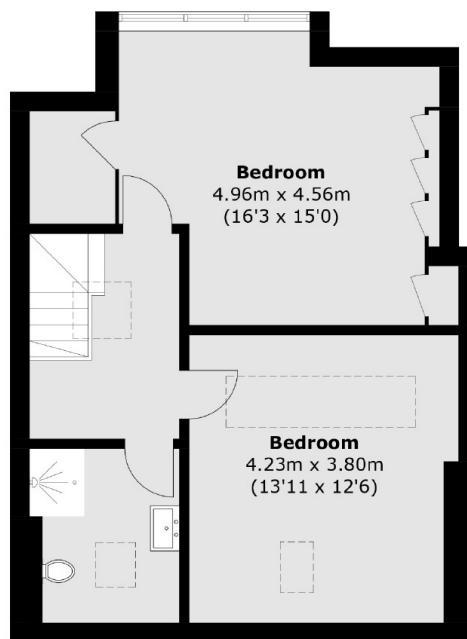
Features

- Top Floors
- Victorian Conversion
- Three Bedrooms
- Two Bathrooms
- Separate WC
- Open Plan Living

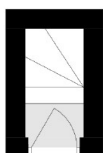
Highbury New Park, London, N5



First Floor



Second Floor



Ground Floor

Total area (approx.): 129.1 sq. m (1,389.5 sq. ft)