

## Upper Street, N1 £700,000

A beautifully presented top-floor, three-bedroom flat set within the sought-after Tyndale Mansions on Upper Street in the heart of Islington. The flat has been thoughtfully refurbished to an excellent standard featuring underfloor heating throughout, a sleek integrated kitchen, and a contemporary bathroom. Further benefits include a demised external storage unit.

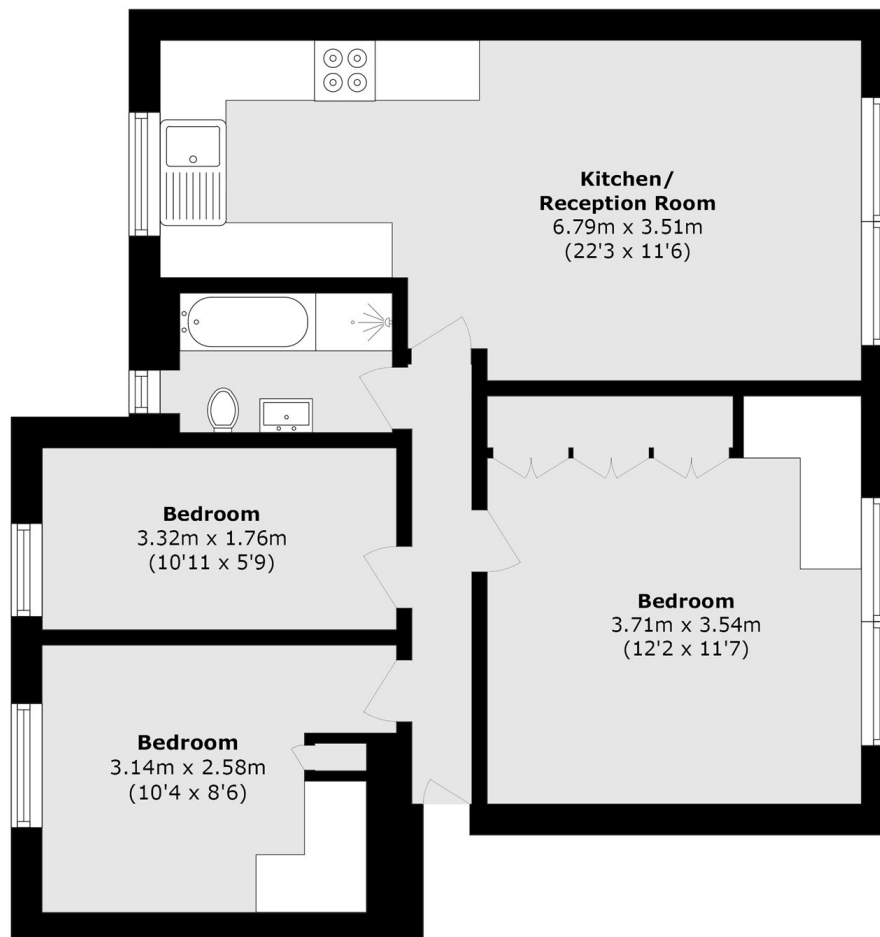
Ideally positioned, Tyndale Mansions enjoys immediate access to the vibrant shops and restaurants of Upper Street, while remaining conveniently close to Highbury & Islington station (0.3 miles) and the open green spaces of Highbury Fields. The property also lies within the highly desirable William Tyndale Primary School catchment area.

### Features

- William Tyndale School Catchment
- Fully Refurbished
- Three Beds
- Communal Gardens
- Storage Unit

# Upper Street, London, N1

**Storage**  
1.37m x 0.76m  
(4'6 x 2'6)



Total area (approx.): 57.7 sq. m (621.0 sq. ft)

External storage area (approx.): 1.04 sq. m (11.1 sq. ft)