



## Sheringham Road, N7

£550,000

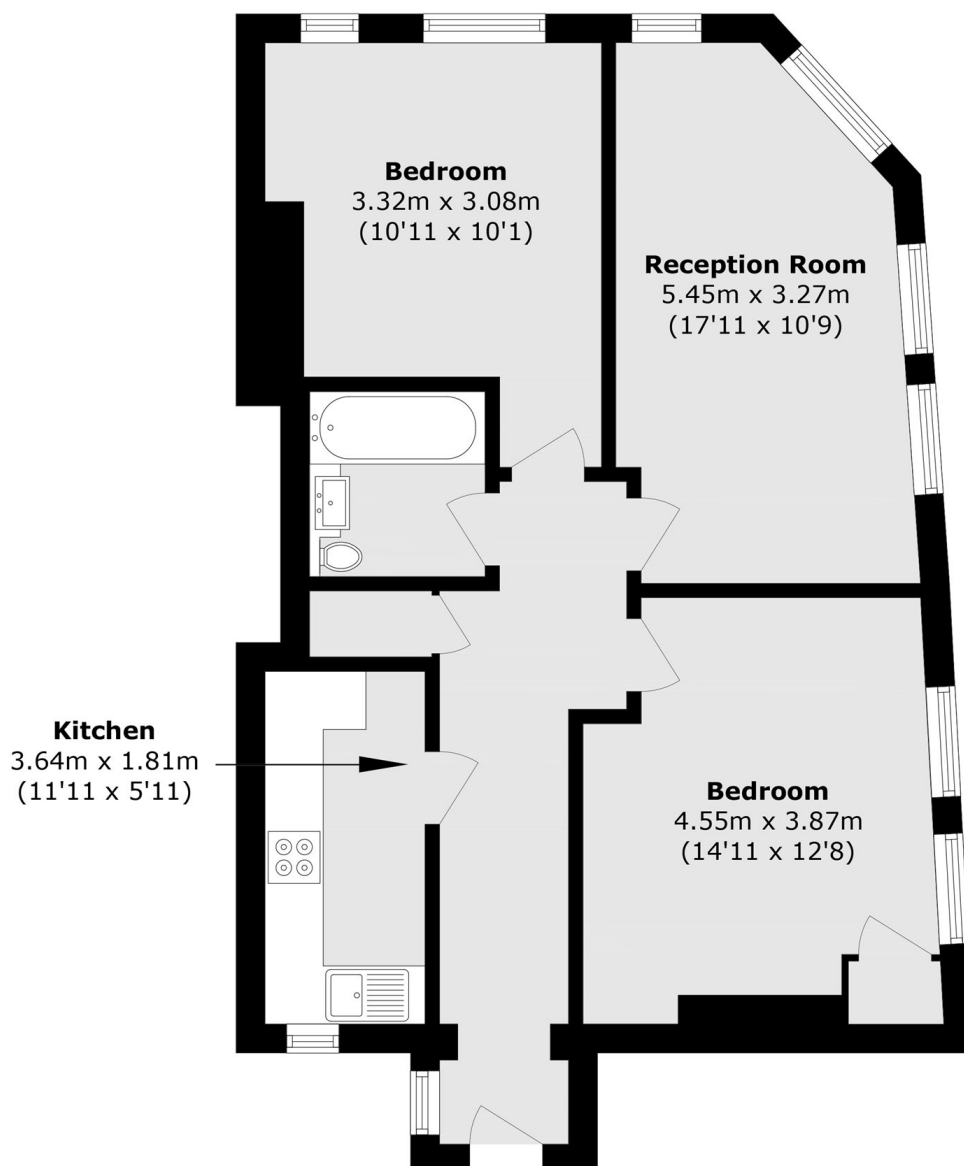
A bright and airy two double bedroom flat set on the first floor of this secured building. The property boasts high ceilings, a separate kitchen and is modern with wooden flooring throughout.

Sheringham Road is set close to a variety of scenic outdoor spaces such as the popular Highbury Fields and Paradise Park. Transport across London is made easy with Highbury and Islington (Victoria line) being the closest underground link as well as Holloway Road station. Numerous bus routes can also be found nearby along with easy access to St Pancras International. There are also a variety of shops, restaurants, cafés and bars nearby.

### Features

- Two Bedrooms
- First Floor
- Modern Throughout
- Close to Transport Links
- Close to Amenities

# Sheringham Road, London, N7



Total area (approx.): 65.5 sq. m (705.0 sq. ft)