



Highbury Grange, N5

£635,000

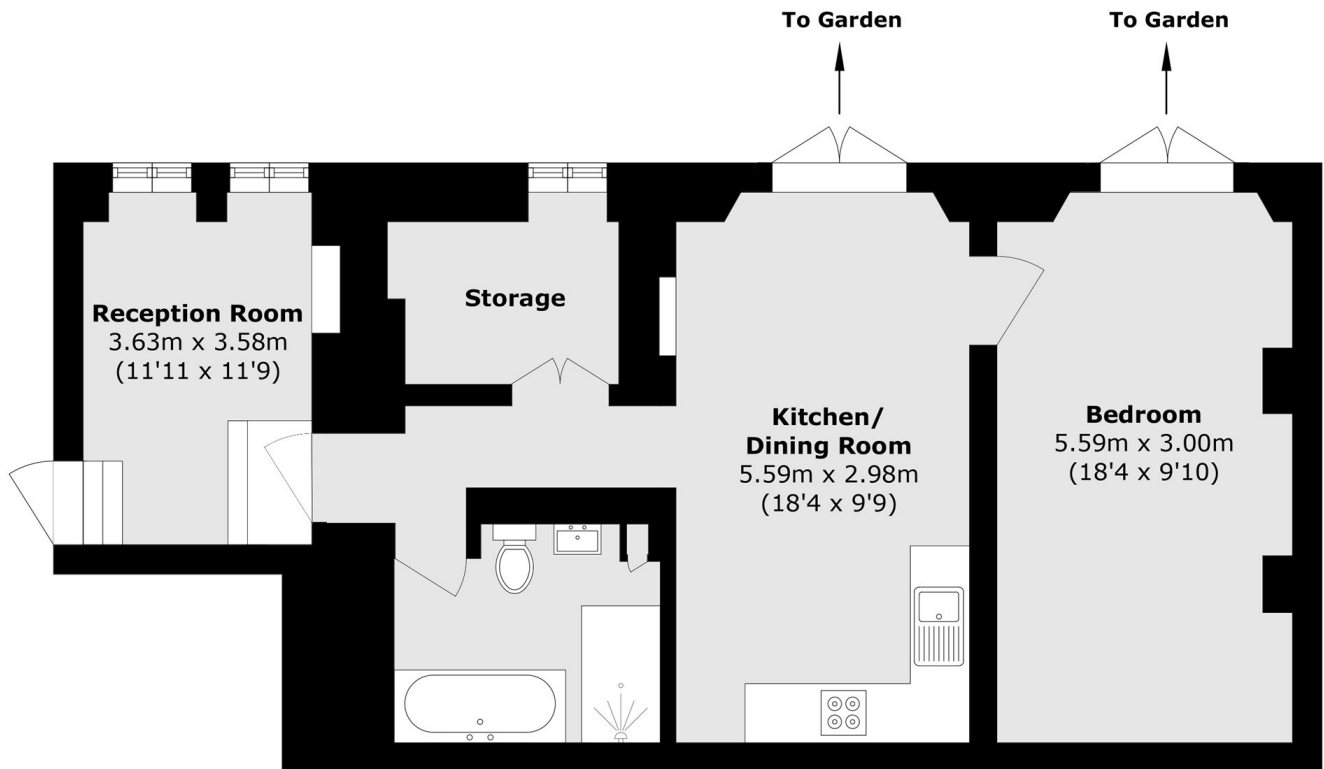
This substantial home offers flexible living, with well-proportioned rooms and direct access to an expansive, well-maintained communal garden. The current owners have recently replaced the bathroom and presently use the flat as a generous one-bedroom, with a separate eat-in kitchen/diner ideal for entertaining. The large storage room could easily be reconfigured as a home office if required. Offered chain free.

Situated just moments from the boutique shops, cafés, and services of Highbury Barn. This home is also ideally located for transport, with Highbury and Islington station (Victoria and Overground) station being within easy reach. For green space, popular Highbury Fields is just at the end of the road.

Features

- Chain Free
- Direct Access To Garden
- 687 Square Foot
- Ample Storage
- Separate Kitchen/Diner
- Flexible Living Space
- New Bathroom
- Share of Freehold

Highbury Grange, London, N5



Total area (approx.): 63.9 sq. m (687.8 sq. ft)