



Arundel Square, N7

£1,200,000

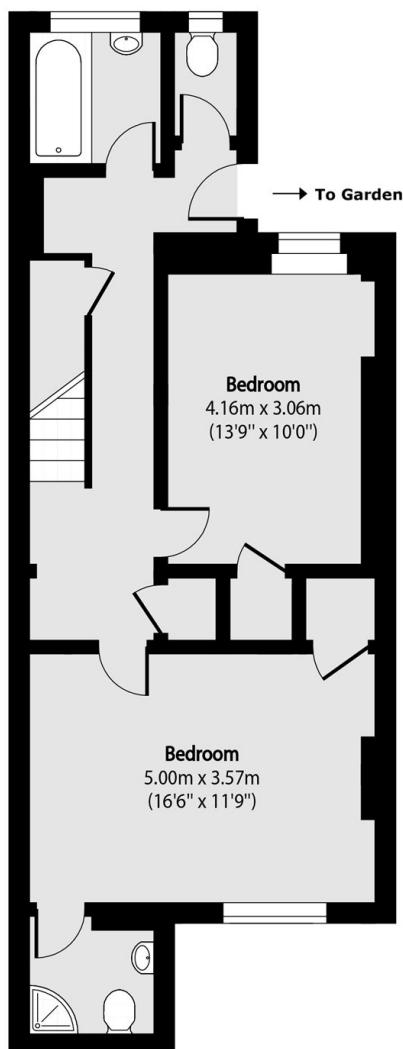
A charming split-level, three-bedroom, two-bathroom flat, ideally set within a tranquil garden square in Islington. The lower ground floor opens directly onto a generous private garden which, subject to planning, offers development potential (with precedent set along the terrace). This attractive period conversion features a lovely reception room with retained period details, well-proportioned bedrooms and impressive high ceilings throughout.

Arundel Square is a quiet garden square in Islington ideally positioned less than half a mile away from Highbury and Islington Station (Victoria & Overground) and just over half a mile from Caledonian Road Station (Piccadilly). The vibrant array of shops and eateries along Upper Street is also within easy reach.

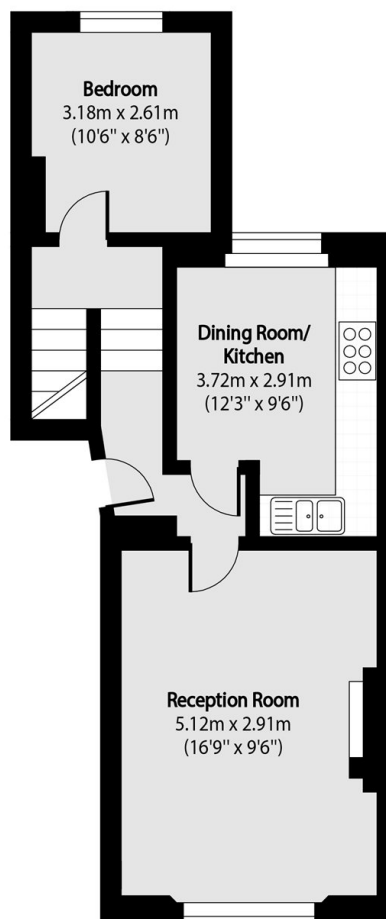
Features

- Private Garden
- Three Bedrooms
- Two Bathrooms
- High Ceilings
- Garden Square
- Chain Free

Arundel Square, London, N7



Lower Ground Floor



Ground Floor

Total area (approx): 104.91 sq m (1129 sq. ft)