



Kent Gardens, W13
£1,350,000

Dexters



Kent Gardens, W13

This five bedroom, two bathroom, two reception room family home has been extended and modernised throughout to an exceptional standard by the current owners. There is a large, landscaped, rear garden and off street parking to the front with parking for multiple cars.

A fine example of a five bedroom family home that has been extended and modernised throughout. On the ground floor the property has been extended to create a fantastic open plan kitchen/dining/family space opening onto the large rear garden. There is a separate front reception room.

On the first floor there are four bedrooms, naturally, and a family bathroom. The loft conversion provides an additional double bedroom with en-suite shower room.

To the front of the property there is a secure electric gate with off street parking for multiple vehicles.

Kent Gardens is located just moments from the popular Pitshanger Lane, Pitshanger Park and Cleveland Parks. There are numerous excellent local schools, state and private. Ealing Broadway station is a short bus ride, or walk of approximately a mile.

Features

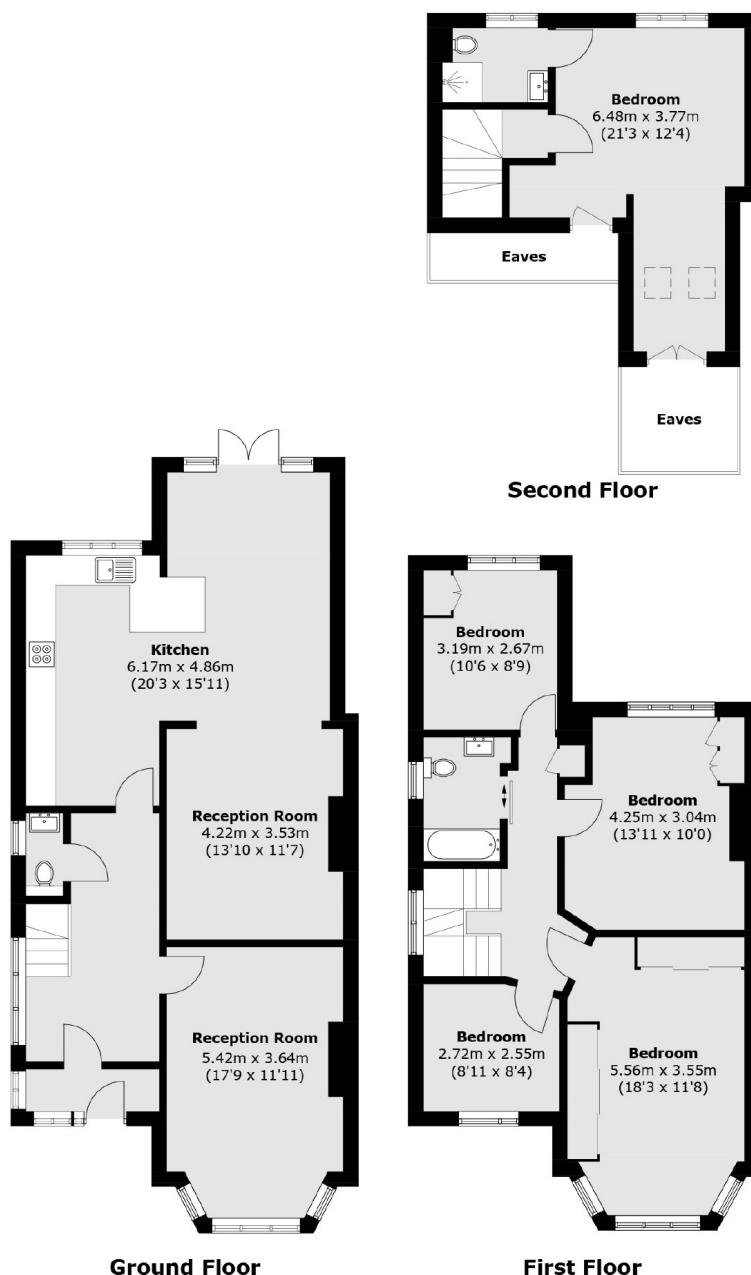
- Five Bedrooms
- Two Bathrooms
- Two Reception Rooms
- Ground Floor Extended
- Large Garden
- Off Street Parking







Kent Gardens, London, W13



Total area (approx.): 174.6 sq. m (1,879.4 sq. ft)
(Excluding Eaves)

Dexters

Ealing
2 New Ealing Broadway
London
W5 2NU
Sales
020 8810 0909

Energy Rating: D. We aim to make our particulars both accurate and reliable. However they are not guaranteed; nor do they form part of an offer or contract. If you require clarification on any points then please contact us, especially if you're traveling some distance to view. Please note that appliances and heating systems have not been tested and therefore no warranties can be given as to their good working order.

RICS Regulated
Estate Agent
and Letting Agent

dexters.co.uk