



## Western Avenue, W5

### £285,000

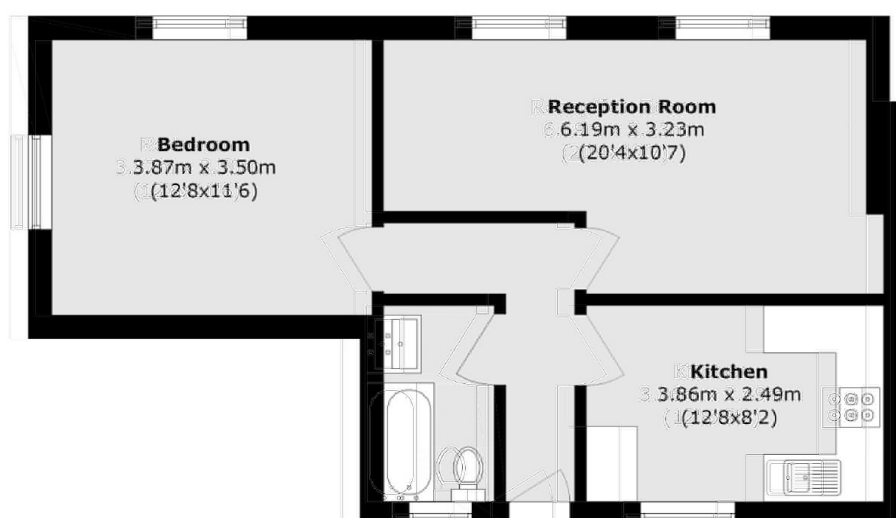
This spacious one bedroom apartment, situated on the top floor, is offered with no onward chain. There is a separate kitchen and large reception room, flooded with natural light. Benefiting from lift access and residents parking, this is a perfect first time buy or buy-to-let investment.

Located next to Hanger Lane tube station with its Central Line access into the city with Piccadilly Line access around half a mile away. The A40 for easy access in and out of London is also moments away.

### Features

- Top Floor
- Lift Access
- No Onward Chain
- One Bedroom
- Close To Transport
- Share of Freehold

Western Avenue,  
London, W5



Total area (approx.): 51.7 sq. m (556.5 sq. ft)

**Dexters**

Ealing  
2 New Ealing Broadway  
London  
W5 2NU  
Sales  
020 8810 0909

Energy Rating: D. We aim to make our particulars both accurate and reliable. However they are not guaranteed; nor do they form part of an offer or contract. If you require clarification on any points then please contact us, especially if you're traveling some distance to view. Please note that appliances and heating systems have not been tested and therefore no warranties can be given as to their good working order.

 **RICS** | Regulated  
Estate Agent  
and Letting Agent

[dexters.co.uk](http://dexters.co.uk)