



## Copley Close, W7

£345,000

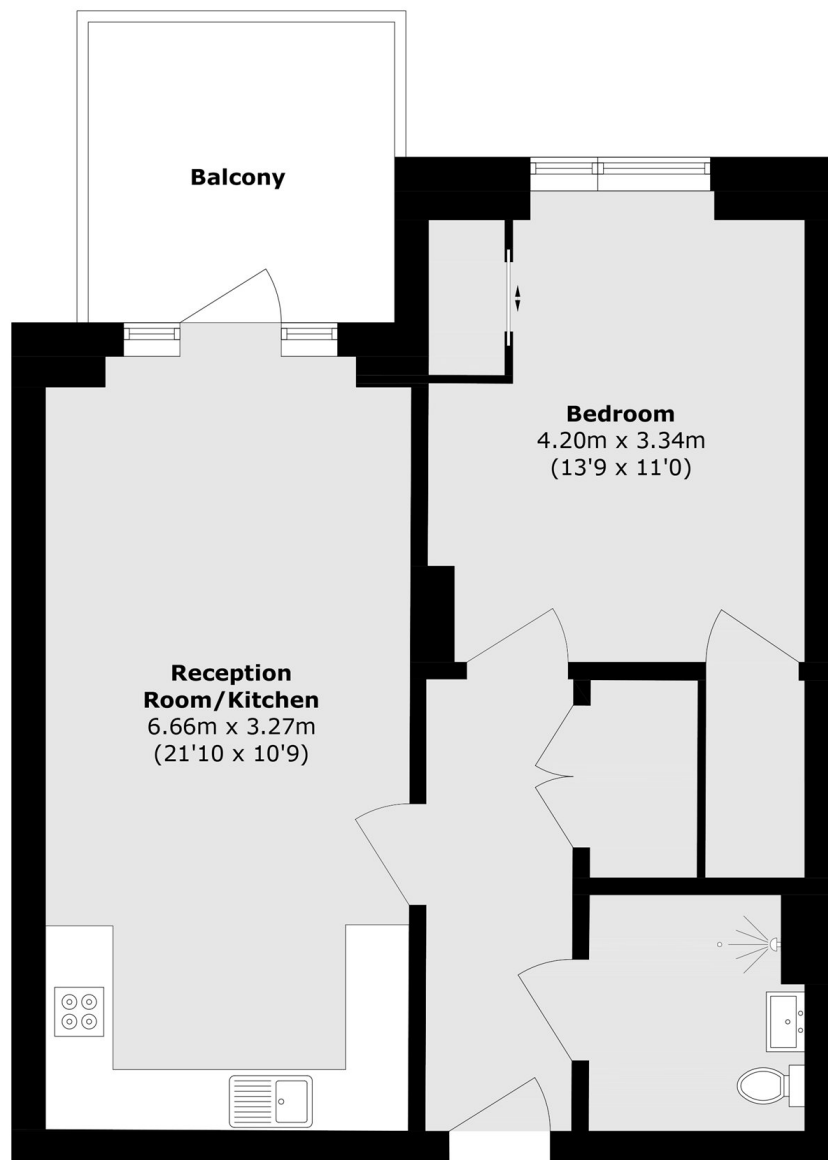
This one bedroom apartment was completed in 2021 and has the benefit of six years build warranty remaining. Located on the sixth floor, the property is immaculate throughout and has fantastic views towards London with a large balcony adding to the spacious interior.

Forming part of the new central square development the property is opposite Castlebar Park station, linking with the new Elizabeth Line at West Ealing (a mile away). There is a range of local shops along Greenford Avenue, along with the 2027/28 plans for the Gurnell Leisure centre regeneration.

### Features

- One Bedroom
- Large Balcony
- Sixth Floor
- Lift Access
- Fantastic Views
- Remaining Build Warranty

Copley Close,  
London, W7



Total area (approx.): 51.2 sq. m (551.1 sq. ft)

Balcony area (approx.): 7.2 sq. m (77.5 sq. ft)

**Dexters**

Ealing  
2 New Ealing Broadway  
London  
W5 2NU  
Sales  
020 8810 0909

Energy Rating: B. We aim to make our particulars both accurate and reliable. However they are not guaranteed; nor do they form part of an offer or contract. If you require clarification on any points then please contact us, especially if you're traveling some distance to view. Please note that appliances and heating systems have not been tested and therefore no warranties can be given as to their good working order.

 **RICS** | Regulated  
Estate Agent  
and Letting Agent

[dexters.co.uk](https://www.dexters.co.uk)