



## Cedar Grove, W5

£475,000

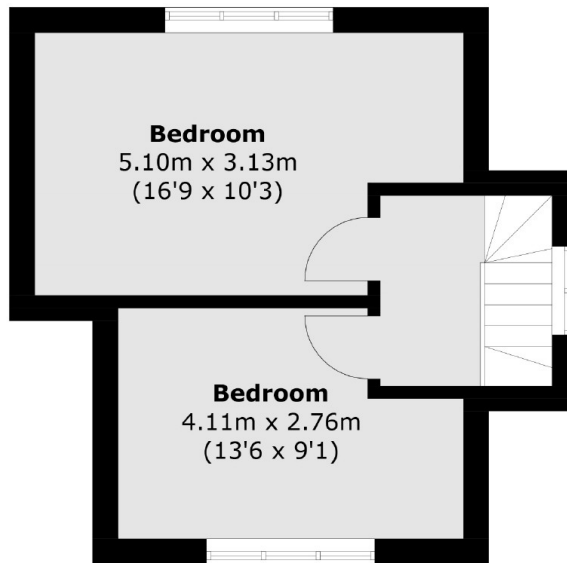
A spacious three bedroom split level maisonette. Entering through your own front door and up to an open plan kitchen/living room on the first floor. There are three spacious bedrooms and a modern bathroom over the top two levels. Externally there is an off street parking space.

Located within the popular residential Trees estate it is less than half a mile to South Ealing Piccadilly line station. Ealing Broadway with the Elizabeth line is approximately 1 mile. The green space of Gunnersbury Park is close by, as well as easy access to the M4.

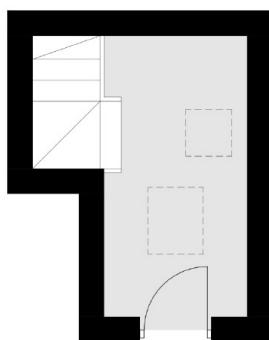
### Features

- Three Bedrooms
- Split Level
- Own Entrance
- Off Street Parking
- Share Of Freehold
- No Onward Chain

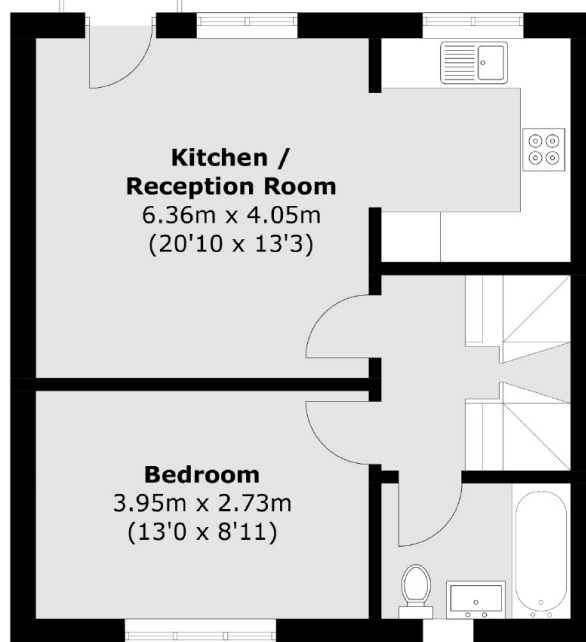
# Cedar Grove, London, W5



**Second Floor**



**Ground Floor**



**First Floor**

Total area (approx.): 81.6 sq. m (878.3 sq. ft)