



Grange Park, W5

£399,950

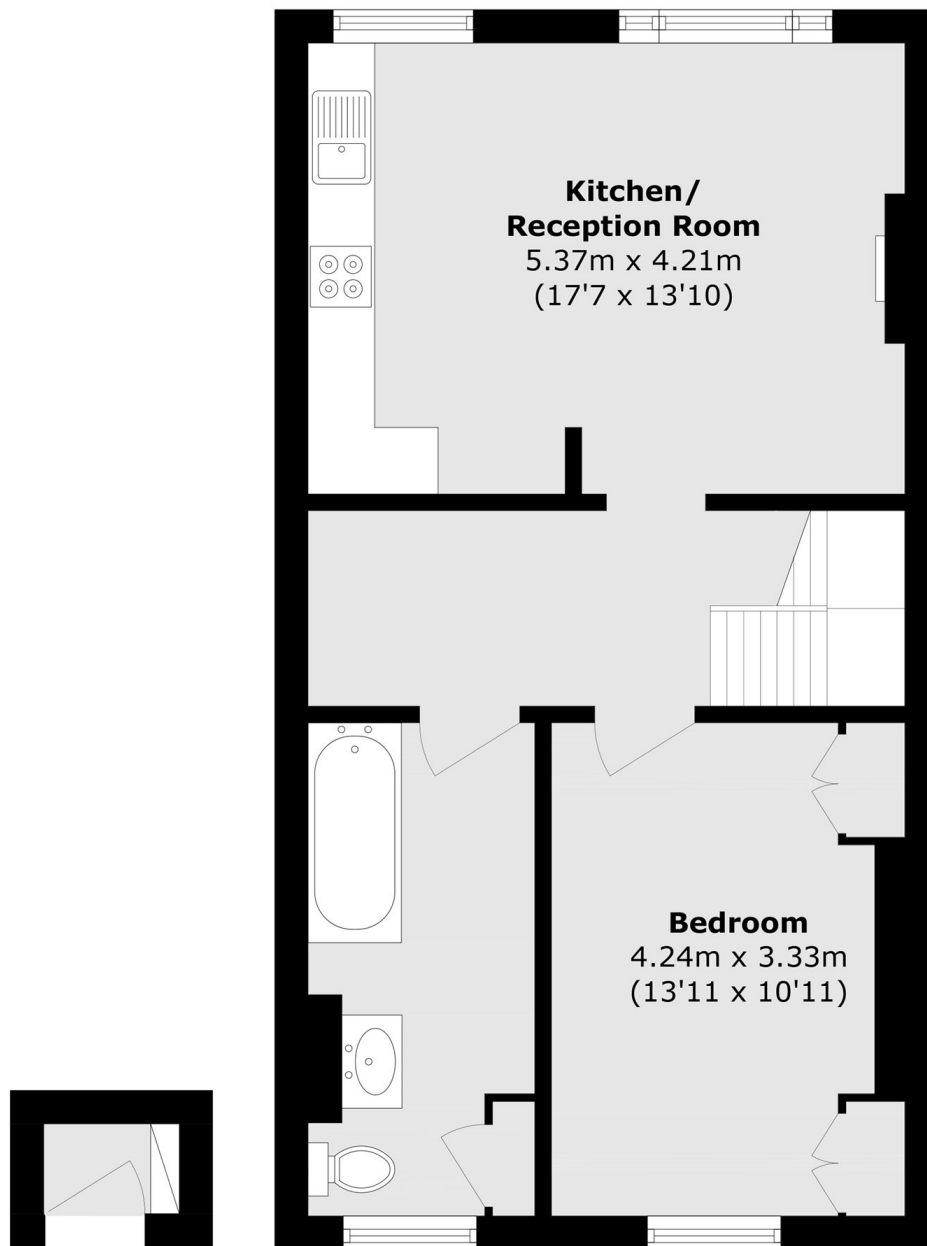
A top floor one bedroom period conversion offered to the market with no onward chain. Occupying the entire top floor, many neighbouring properties have been reconfigured into two bedroom apartments. The property also benefits from a demised loft space with scope for extension STPP.

Located just moments from Ealing Common and half a mile from the Elizabeth, Central and District lines at Ealing Broadway. There is a wide range of shops, restaurants, gyms and amenities in the centre of Ealing Broadway shopping centre, a short walk away.

Features

- One Bedroom
- Top Floor
- Demised Loft Space
- Scope For Extension
- No Onward Chain
- Share Of Freehold

Grange Park,
London, W5



First Floor

Second Floor

Total area (approx.): 57.6 sq. m (620.0 sq. ft)

Dexters

Ealing
2 New Ealing Broadway
London
W5 2NU
Sales
020 8810 0909

Energy Rating: C. We aim to make our particulars both accurate and reliable. However they are not guaranteed; nor do they form part of an offer or contract. If you require clarification on any points then please contact us, especially if you're traveling some distance to view. Please note that appliances and heating systems have not been tested and therefore no warranties can be given as to their good working order.

RICS | Regulated
Estate Agent
and Letting Agent

[dexters.co.uk](https://www.dexters.co.uk)